

# *F-tronic*<sup>®</sup>

the innovative partner of electric equipment distributors



## Main CATALOGUE

2006/07

# How to find us!

Thanks to its location close to Saarbrücken-Ensheim Airport, F-tronic is easily accessible at all times.

The proximity to the A6 motorway also allows easy access by car.



## *F-tronic*®

Winfried Fohs GmbH  
Zum Gerlen 25  
66131 Saarbrücken  
Germany

Phone: +49 (0) 68 93 / 94 83-0  
Fax: +49 (0) 68 93 / 67 68  
Internet: [www.f-tronic.de](http://www.f-tronic.de)  
eMail: [info@f-tronic.de](mailto:info@f-tronic.de)

# CONTENTS

## Distribution boards

Seite 5.1-5.2

**New**

⇒ Distribution boards



## Small distributors

Page 6-17

**New**

- ⇒ Undersurface/cavity wall distributors
- ⇒ Undersurface combination - stainless steel
- ⇒ Wall-mounted small distributors
- ⇒ Circuit-breaker/fuse boxes
- ⇒ Wall-mounted damp-area small distributors



## Wall-mounted junction boxes

Page 18-21

**New**

- ⇒ Ceiling and socket covers
- ⇒ Junction boxes - IP 30
- ⇒ Wall-mounted damp-area junction boxes - IP 54



## Attachment fittings

Page 22-25

- ⇒ Cable holders
- ⇒ Retaining brackets
- ⇒ Pressure and cable clamps
- ⇒ Nail washers and nail clamps



## Undersurface/cavity wall sockets and junction boxes

Page 26-33

**New**

- ⇒ Switch and junction boxes
- ⇒ Connectors with press-out-membranes
- ⇒ Plastering covers and adjustment rings
- ⇒ Cavity wall and undersurface sockets
- ⇒ Junction boxes and screw covers



## Grounding materials

Page 34-35

- ⇒ Potential equalisation rail
- ⇒ Bath grounding terminal
- ⇒ Grounding clamps and pipe clamps
- ⇒ Grounding strip and cross-connectors
- ⇒ Fork and comb rails



## Socket distributors and power supply columns

Page 36-52

**New**

- ⇒ Compact distributors
- ⇒ Aluminium rail ports
- ⇒ Power supply and telecommunications columns
- ⇒ Combination socket units
- ⇒ Weather protection systems



*F-tronic*<sup>®</sup>

# A DYNAMIC FAMILY COMPANY

- ⇒ Founded in 1990, the company originally specialised in the development and manufacture of electronic measurement, control switches and the development of new processes for non-destructive materials testing in the ceramics field.
- ⇒ In 1991, the product range was expanded considerably by the take-over of a polymer business producing electronic installation equipment.
- ⇒ The construction of a new production and administration building in 1995 created a modern manufacturing facility with over 2,000 m<sup>2</sup> of production area. Additional capacity for innovative ideas and products was added in 1998 with a further 2,000 m<sup>2</sup> expansion of production and storage area.
- ⇒ 2005 the first full-automatic high rack storage facility with over 2000 racks was taken into service.
- ⇒ At the beginning 2006 the first three full-automatically controlled polymere granulate storage systems for the production systems are installed.
- ⇒ The latest technologies and our qualified and dedicated staff support us in the realisation of our forward-looking ideas. Care in the selection of materials and precision throughout the complete production process are well worthwhile. Technical optimization and the maximum possible quality are advantages from which you as our business partner can only benefit.



# WE MAKE SPACE FOR YOUR CONNECTIONS ...

We make space for your connections ...  
- this is the philosophy by which we turn our skills and experience into forward-looking and qualitatively mature products.

We would therefore like to use this main catalogue to present our comprehensive product range.

Every day, we face new challenges in order to implement clever new ideas, and to develop innovative new products with the maximum level of functionality.

# CONNECTIONS ...

Good quality, comprehensive know-how and a fast delivery service are just a few of the advantages enjoyed by our business partners.

Just ask us – we are waiting to hear from you!



Winfried Fohs, Managing Director



Jürgen Goldinger, Managing Director



Managing Directors Jürgen Goldinger (l.) and Winfried Fohs (r.)

## *F-tronic*-Innovation, that will amaze you!

For our customers we manufacture complete solutions for future-orientated distribution boards.

With a well motivated and skilled staff we are manufacturing well known german high-quality products and therefore we also ensure our home-based location within Germany.

Our *F-tronic* distribution boards, modular extension systems, inserte sets and also supplementaries fit well to our customer's requirements.

More over we have set new standards for our friends from field of architecture, installation planning and as well from the field of electric handcraft.



### Your advantages:

- ⇒ High flexibility due to modular systems
- ⇒ Intelligent mounting system and fast and flexible wall installation
- ⇒ Connecting work space is enhanced up to 20 per cent
- ⇒ Biggest integrated but also dismountable cable inlet flange
- ⇒ Redundant and stable fixing system of the back-up structure
- ⇒ Stable housing (1 mm thickness of powder-coated steel plate analogous RAL 9010) with inner profiles
- ⇒ 25 different sizes of housings with almost no limitation of the inserts
- ⇒ New standard setting design
- ⇒ Large variety of supplementaries, like cover strips, captions and labelling
- ⇒ Compact mounting area by application of optional door systems

Please ask our partners of *F-tronic* for the distribution board main catalogue for your location.

# From Professionals - For Professionals

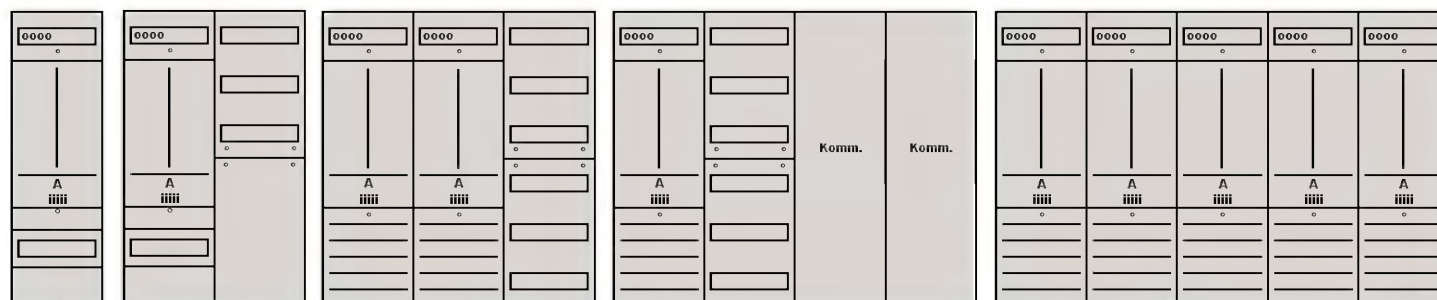
**Lists of  
distribution  
boards  
NW**

**Lists of  
distribution  
boards  
NO**



**Lists of  
distribution  
boards  
SW**

**Lists of  
distribution  
boards  
SO**



Please ask our partners of *F-tronic* for the distribution board main catalogue for your location.

# A world first

*Innovation, that will amaze you*

The distributor,  
that sets new standards!

The benefits at a glance:

- ⇒ Save up to **20 minutes** installation time per distributor
- ⇒ No more inconvenient and time-consuming cutting out of the cable inlet flange
- ⇒ The integrated cable holders allow the cables to be fed in quickly and easily, and also release tensional stresses on the cables
- ⇒ The cable holders also prevent the cables from springing out accidentally – a big plus for safety at work
- ⇒ Large and convenient wiring area with 17 mm separating distance between the main rail and rear wall



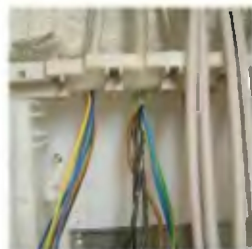
6.1



CE     IP 30



Following distributor installation, all the cables are conveniently pressed into the holders.



This saves unnecessary fitting time and cutting out work.



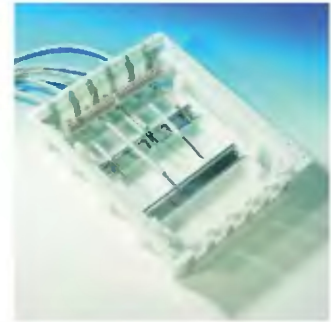
Strip the cable ends and simply push them into the holders – quick, neat and amazingly simple!



The holders provide adequate tension relief and excellent protection against plaster, mortar, filling foam etc.

# UNDERSURFACE COMPLETE DISTRIBUTORS

- ⇒ Clip-in cable inlets from above and below
- ⇒ With perforated rail for reliable tension relief
- ⇒ Pre-assembled, transparent PE and N terminals
- ⇒ Removable and rotatable fitting holder for subsequent adjustment and alignment of frame, door and fitting rail
- ⇒ With 4 installation aids or 4 cavity wall mounting anchors



7.1

Dimensions of masonry housing in mm

| Dimensions | H   | W   | D  |
|------------|-----|-----|----|
| UPV12      | 278 | 300 | 90 |
| UPV24      | 405 | 300 | 90 |
| UPV36      | 535 | 300 | 90 |

## Undersurface complete distributors – metal

- ⇒ complete with undersurface masonry housing and door with trim frame of steel plate
- ⇒ packed as one unit

| Article No.      | Version           | Colour           | Unit qty. | Outer carton | Palette | €/100    |
|------------------|-------------------|------------------|-----------|--------------|---------|----------|
| <b>UPV 12 ST</b> | 1-row, 12 modules | approx. RAL 9016 | 1         | 8            | 115     | 5,519.50 |
| <b>UPV 24 ST</b> | 2-row, 24 modules | approx. RAL 9016 | 1         | 6            | 84      | 5,740.29 |
| <b>UPV 36 ST</b> | 3-row, 36 modules | approx. RAL 9016 | 1         | 5            | 60      | 7,506.52 |

7.2

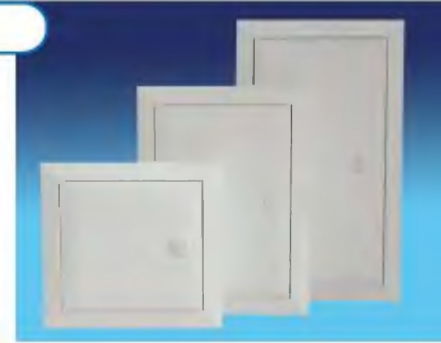


## Undersurface complete distributors – plastic

- ⇒ complete with undersurface masonry housing and door with trim frame made from high ductility polymere
- ⇒ fracture and impact resistant

| Article No.      | Version           | Colour           | Unit qty. | Palette | €/100    |
|------------------|-------------------|------------------|-----------|---------|----------|
| <b>UPV 12 KW</b> | 1-row, 12 modules | approx. RAL 9016 | 1         | 115     | 5,094.72 |
| <b>UPV 24 KW</b> | 2-row, 24 modules | approx. RAL 9016 | 1         | 84      | 5,298.72 |
| <b>UPV 36 KW</b> | 3-row, 36 modules | approx. RAL 9016 | 1         | 60      | 6,928.60 |

7.3



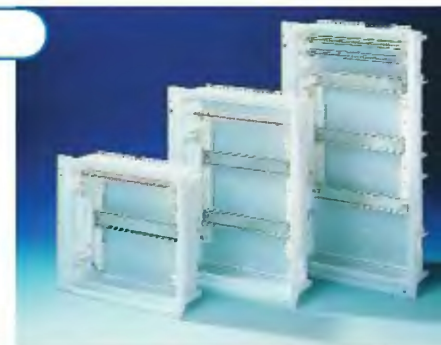
## Undersurface masonry housings

- ⇒ Masonry housings individually welded in

| Article No.      | Version           | Colour           | Unit qty. | Palette | €/100    |
|------------------|-------------------|------------------|-----------|---------|----------|
| <b>UPV 12 MK</b> | 1-row, 12 modules | approx. RAL 9016 | 1         | 120     | 2,670.14 |
| <b>UPV 24 MK</b> | 2-row, 24 modules | approx. RAL 9016 | 1         | 120     | 2,980.54 |
| <b>UPV 36 MK</b> | 3-row, 36 modules | approx. RAL 9016 | 1         | 60      | 3,863.65 |

Price incl. VAT - recommended price in Euro

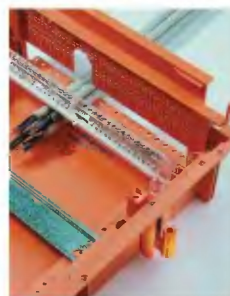
7.4



## CAVITY WALL COMPLETE DISTRIBUTORS

Dimensions of masonry housing in mm

| Dimensions | H   | W   | D  |
|------------|-----|-----|----|
| UPV12      | 278 | 300 | 90 |
| UPV24      | 405 | 300 | 90 |
| UPV36      | 535 | 300 | 90 |



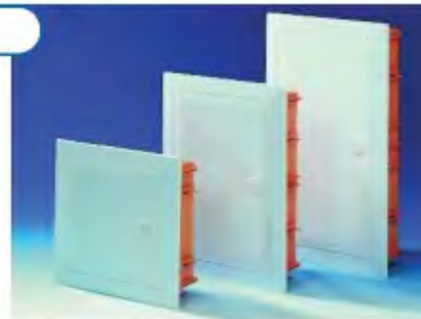
8.1

### Cavity wall complete distributors – metal

- ⇒ complete with cavity wall lower section and door with trim frame of steel plate
- ⇒ packed as one unit

| Article No.      | Version                               | Colour           | Unit qty. | Outer carton | Palette | €/100    |
|------------------|---------------------------------------|------------------|-----------|--------------|---------|----------|
| <b>HWV 12 ST</b> | 1-row, 12 modules                     | approx. RAL 9016 | 1         | 8            | 115     | 7,064.90 |
| <b>HWV 24 ST</b> | 2-row, 24 modules                     | approx. RAL 9016 | 1         | 6            | 84      | 7,948.08 |
| <b>HWV 36 ST</b> | 3-row, 36 modules                     | approx. RAL 9016 | 1         | 5            | 60      | 9,936.10 |
| <b>TSU 1</b>     | Cylinder lock with 2 keys for HWV+UPV |                  | 1         |              |         | 1,703.70 |

8.2

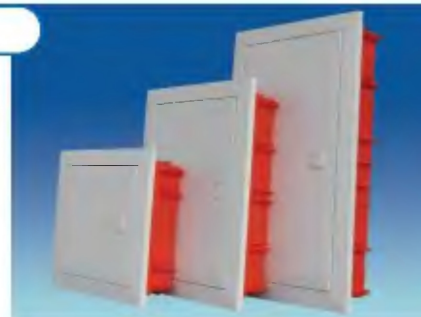


### Cavity wall complete distributors – plastic

- ⇒ complete with cavity wall lower section and door with trim frame made from high ductility polymere fracture and impact resistant

| Article No.      | Version           | Colour           | Unit qty. | Palette | €/100    |
|------------------|-------------------|------------------|-----------|---------|----------|
| <b>HWV 12 KW</b> | 1-row, 12 modules | approx. RAL 9016 | 1         | 115     | 5,920.00 |
| <b>HWV 24 KW</b> | 2-row, 24 modules | approx. RAL 9016 | 1         | 84      | 6,880.00 |
| <b>HWV 36 KW</b> | 3-row, 36 modules | approx. RAL 9016 | 1         | 60      | 9,560.00 |

8.3



### Cavity wall lower sections

- ⇒ Lower sections individually welded in

| Article No.      | Version           | Colour | Unit qty. | Palette | €/100    |
|------------------|-------------------|--------|-----------|---------|----------|
| <b>HWV 12 UT</b> | 1-row, 12 modules | orange | 1         | 120     | 4,415.61 |
| <b>HWV 24 UT</b> | 2-row, 24 modules | orange | 1         | 100     | 5,188.33 |
| <b>HWV 36 UT</b> | 3-row, 36 modules | orange | 1         | 60      | 6,292.23 |

Price incl. VAT - recommended price in Euro

8.4



## Doors with trim frame – metal

⇒ Doors with trim frame individually packed in sealed carton (for undersurface and small cavity wall distributors)

| Article No. | Version                 | Colour           | Unit qty. | €/100    |
|-------------|-------------------------|------------------|-----------|----------|
| UPV 12 TM   | for 1-row lower section | approx. RAL 9016 | 1         | 2,870.14 |
| UPV 24 TM   | for 2-row lower section | approx. RAL 9016 | 1         | 2,980.53 |
| UPV 36 TM   | for 3-row lower section | approx. RAL 9016 | 1         | 3,863.65 |

9.1



## Doors with trim frame – plastic

⇒ Doors with trim frame individually packed in sealed carton (for undersurface and small cavity wall distributors)

| Article No. | Version                 | Colour              | Unit qty. | €/100    |
|-------------|-------------------------|---------------------|-----------|----------|
| UPV 24 TW   | for 2-row lower section | approx. RAL 9016    | 1         | 2,649.36 |
| UPV 24 TK   | for 2-row lower section | transparent, clear  | 1         | 2,870.14 |
| UPV 24 TR   | for 2-row lower section | transparent, smoked | 1         | 2,870.14 |

9.2



## Cover strips

| Article No. | Version      | Colour           | Unit qty. | Outer carton | €/100  |
|-------------|--------------|------------------|-----------|--------------|--------|
| ADS 12 W    | Cover strips | approx. RAL 9016 | 10        | 500          | 176.62 |
| ADS 12 GR   | Cover strips | approx. RAL 7035 | 10        | 500          | 176.62 |
| ADS 12 S    | Cover strips | approx. RAL 9001 | 10        | 500          | 176.62 |

9.3



9.4



## PE/N terminal rails

| Article No. | Version   | Unit qty. | €/100  |
|-------------|---|-----------|--------|
| PEN 24      | PE/N terminal rail for 1- and 2-row distributor | 1         | 838.96 |
| PE 36       | PE terminal rail for 3-row distributor          | 1         | 838.96 |
| N 36        | N terminal rail for 3-row distributor           | 1         | 838.96 |

9.5



## Replacement parts

| Article No. | Version   | Unit qty. | €/100    |
|-------------|---|-----------|----------|
| UPV MH      | Installation fittings   | 4         | 375.33   |
| UPV LE      | Cable inlet for undersurface masonry housing                                | 2         | 662.34   |
| UPV LEN     | Cable inlet for undersurface masonry housing – new                          | 2         | 1,103.90 |
| HWV BA      | Cavity wall installation set  | 4         | 993.16   |
| HWV LE      | Cable inlet for cavity wall lower section<br>See figure 9.7, colour: orange | 2         | 772.73   |

9.6



Figure 9.6

9.7



Figure 9.7

Figure 9.8

9.8



Figure 9.9

9.9



Price incl. VAT - recommended price in Euro

### Combination sockets to meet the highest demands.

- ⇒ Reliable, stainless steel construction
- ⇒ Front of brushed stainless steel
- ⇒ Door with cylinder lock, can be integrated into locking system
- ⇒ With integral cable outlet, allowing door to be locked with sockets in use
- ⇒ For installation in solid or cavity walls
- ⇒ Trim frame also acts as adjustment fitting for undersurface
- ⇒ Cable inlets at top and bottom for cables up to 25 mm<sup>2</sup>
- ⇒ Applications: public buildings, sports and function halls and stage equipment
- ⇒ Other fitting options and dimensions available on request



### Fitted undersurface combinations

| Article No.     | Fitting  | Installation dimensions HxWxD | Prices     |
|-----------------|--|-------------------------------|------------|
| <b>EUK 8 B</b>  | 1 x CEE 16A, 2 x safety sockets<br>1 x LS switch 16A, 3p, C<br>2 x LS switch 16A, 1p, B<br>1 x FI switch 40A, 4p, I=0.03A  | 550 x 230 x 200               | On request |
| <b>EUK 8</b>    | Not fitted   | 550 x 230 x 200               | On request |
| <b>EUK 12 B</b> | 1 x CEE 32A, 1 x CEE 16A, 2 x safety sockets<br>1 x LS switch 32A, 3p, C<br>1 x LS switch 16A, 3p, C<br>2 x LS switch 16A, 1p, B<br>1 x FI switch 40A, 4p, I=0.03A | 550 x 320 x 200               | On request |
| <b>EUK 12</b>   | Not fitted   | 550 x 320 x 200               | On request |

## WALL-MOUNTED (WM) SMALL DISTRIBUTORS

### Proven technology in contemporary design

- ⇒ For equipment up to 63A to DIN VDE 0603 Part 1
- ⇒ Rear wall and housing cover of polystyrol, silicon- and halogen-free to DIN VDE 0472
- ⇒ Housing cover with quick-fastening screws, approx. RAL 9016, impact-proof, with pre-stamped cable inlets
- ⇒ With cover strips, self-adhesive label strip and designation
- ⇒ For right or left door opening



11.2



11.1

- Closed rear wall with pre-stamped cable inlets
- Large and convenient wiring area with 17 mm separating distance between the main rail and rear wall
- Pre-assembled, transparent PE and N terminals with opened terminals

Dimensions in mm.

| Dimensions | H   | W   | D   |
|------------|-----|-----|-----|
| APV 12     | 236 | 266 | 102 |
| APV 24     | 344 | 266 | 102 |
| APV 36     | 492 | 266 | 102 |

CE     IP 30

## Complete distributors with door – metal

⇒ Incl. mounted cylinder-lock ex works

| Article No.      | Version                   | Colour           | Unit qty. | Outer carton | Palette | €/100    |
|------------------|---------------------------|------------------|-----------|--------------|---------|----------|
| <b>APV 12 ST</b> | 1-row, 12 modules         | approx. RAL 9016 | 1         | 12           | 156     | 4,194.82 |
| <b>APV 24 ST</b> | 2-row, 24 modules         | approx. RAL 9016 | 1         | 10           | 126     | 6,071.45 |
| <b>APV 36 ST</b> | 3-row, 36 modules         | approx. RAL 9016 | 1         | 6            | 78      | 8,389.65 |
| <b>TSA 1</b>     | Cylinder lock with 2 keys |                  | 1         |              |         | 1,324.68 |

12.1



## Complete distributors with door – plastic, pure white

| Article No.      | Version           | Colour           | Unit qty. | Outer carton | Palette | €/100    |
|------------------|-------------------|------------------|-----------|--------------|---------|----------|
| <b>APV 12 KW</b> | 1-row, 12 modules | approx. RAL 9016 | 1         | 12           | 156     | 3,642.87 |
| <b>APV 24 KW</b> | 2-row, 24 modules | approx. RAL 9016 | 1         | 10           | 126     | 5,519.50 |
| <b>APV 36 KW</b> | 3-row, 36 modules | approx. RAL 9016 | 1         | 6            | 78      | 7,727.31 |

12.2



## Complete distributors with door – plastic, transparent, clear

| Article No.      | Version           | Colour            | Unit qty. | Outer carton | Palette | €/100    |
|------------------|-------------------|-------------------|-----------|--------------|---------|----------|
| <b>APV 12 KT</b> | 1-row, 12 modules | transparent clear | 1         | 12           | 156     | 3,753.27 |
| <b>APV 24 KT</b> | 2-row, 24 modules | transparent clear | 1         | 10           | 126     | 5,629.88 |
| <b>APV 36 KT</b> | 3-row, 36 modules | transparent clear | 1         | 6            | 78      | 7,837.70 |

12.3



## Complete distributors with door – plastic, transparent, smoked

| Article No.      | Version           | Colour          | Unit qty. | Outer carton | Palette | €/100    |
|------------------|-------------------|-----------------|-----------|--------------|---------|----------|
| <b>APV 12 KR</b> | 1-row, 12 modules | transpar smoked | 1         | 12           | 156     | 3,863.65 |
| <b>APV 24 KR</b> | 2-row, 24 modules | transpar smoked | 1         | 10           | 126     | 5,740.29 |
| <b>APV 36 KR</b> | 3-row, 36 modules | transpar smoked | 1         | 6            | 78      | 7,948.08 |

12.4



## Small wall-mounted distributors without door

| Article No.   | Version           | Colour           | Unit qty. | Outer carton | Palette | €/100    |
|---------------|-------------------|------------------|-----------|--------------|---------|----------|
| <b>APV 12</b> | 1-row, 12 modules | approx. RAL 9016 | 1         | 16           | 180     | 2,428.58 |
| <b>APV 24</b> | 2-row, 24 modules | approx. RAL 9016 | 1         | 12           | 135     | 3,753.26 |
| <b>APV 36</b> | 3-row, 36 modules | approx. RAL 9016 | 1         | 8            | 90      | 5,298.72 |

Price incl. VAT - recommended price in Euro

12.5



## Doors – metal

⇒ Incl. mounted cylinder-lock ex works

| Article No.      | Version                   | Colour           | Unit qty. | €/100    |
|------------------|---------------------------|------------------|-----------|----------|
| <b>APV 12 TM</b> | for 1-row WM distributors | approx. RAL 9016 | 1         | 1,766.24 |
| <b>APV 24 TM</b> | for 2-row WM distributors | approx. RAL 9016 | 1         | 2,318.20 |
| <b>APV 36 TM</b> | for 3-row WM distributors | approx. RAL 9016 | 1         | 3,090.92 |

13.1



## Doors – plastic, pure white

| Article No.      | Version                   | Colour           | Unit qty. | €/100    |
|------------------|---------------------------|------------------|-----------|----------|
| <b>APV 12 TW</b> | for 1-row WM distributors | approx. RAL 9016 | 1         | 1,214.29 |
| <b>APV 24 TW</b> | for 2-row WM distributors | approx. RAL 9016 | 1         | 1,766.24 |
| <b>APV 36 TW</b> | for 3-row WM distributors | approx. RAL 9016 | 1         | 2,428.58 |

13.2



## Doors – plastic, transparent, clear

| Article No.      | Version                   | Colour            | Unit qty. | €/100    |
|------------------|---------------------------|-------------------|-----------|----------|
| <b>APV 12 TK</b> | for 1-row WM distributors | transparent clear | 1         | 1,324.68 |
| <b>APV 24 TK</b> | for 2-row WM distributors | transparent clear | 1         | 1,876.63 |
| <b>APV 36 TK</b> | for 3-row WM distributors | transparent clear | 1         | 2,538.97 |

13.3



## Doors – plastic, transparent, smoked

| Article No.      | Version                   | Colour           | Unit qty. | €/100    |
|------------------|---------------------------|------------------|-----------|----------|
| <b>APV 12 TR</b> | for 1-row WM distributors | transpar. smoked | 1         | 1,435.07 |
| <b>APV 24 TR</b> | for 2-row WM distributors | transpar. smoked | 1         | 1,987.02 |
| <b>APV 36 TR</b> | for 3-row WM distributors | transpar. smoked | 1         | 2,649.36 |

13.4



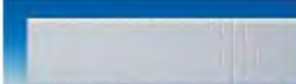
## Cover strips

| Article No.      | Version      | Colour           | Unit qty. | Outer carton | €/100  |
|------------------|--------------|------------------|-----------|--------------|--------|
| <b>ADS 12 W</b>  | Cover strips | approx. RAL 9016 | 10        | 500          | 176.62 |
| <b>ADS 12 GR</b> | Cover strips | approx. RAL 7035 | 10        | 500          | 176.62 |
| <b>ADS 12 S</b>  | Cover strips | approx. RAL 9001 | 10        | 500          | 176.62 |

13.5



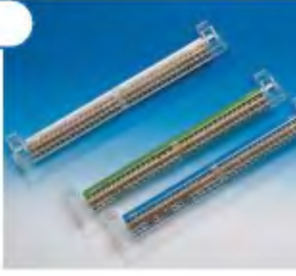
13.6



## PE/N terminal rails

| Article No.   | Version   | Unit qty. | €/100  |
|---------------|---|-----------|--------|
| <b>PEN 24</b> | PE/N terminal rail for 1- and 2-row distributor | 1         | 838.96 |
| <b>PE 36</b>  | PE terminal rail for 3-row distributor          | 1         | 838.96 |
| <b>N 36</b>   | N terminal rail for 3-row distributor           | 1         | 838.96 |

13.7



Price incl. VAT - recommended price in Euro

## CIRCUIT-BREAKER/FUSE BOXES

### Proven technology in contemporary design.

- ⇒ For equipment up to 63A to DIN VDE 0603 Part 1
- ⇒ Rear wall and housing cover of impact-proof, self-extinguishing ABS plastic



14.2



14.1

- Closed rear wall
- With fitted profile rail
- Pre-assembled, brass PE and N terminals

Dimensions in mm:

| Dimensions | H   | W   | D  |
|------------|-----|-----|----|
| KV 02      | 140 | 50  | 65 |
| KV 04      | 160 | 94  | 65 |
| KV 06      | 160 | 140 | 65 |

CE □ ⚡ 🔥 IP 40

### Circuit-breaker/fuse boxes

14.3

| Article No. | Version                              | Colour           | Unit qty. | Outer carton | €/100    |
|-------------|--------------------------------------|------------------|-----------|--------------|----------|
| KV 02       | 2 modules, without terminals         | approx. RAL 9016 | 1         | 192          | 551.95   |
| KV 02 K     | 2 modules, with 4-pin PE/N terminals | approx. RAL 9016 | 1         | 192          | 750.66   |
| KV 04       | 4 modules, without terminals         | approx. RAL 9016 | 1         | 84           | 750.66   |
| KV 04 K     | 4 modules, with 4-pin PE/N terminals | approx. RAL 9016 | 1         | 84           | 949.35   |
| KV 06       | 6 modules, without terminals         | approx. RAL 9016 | 1         | 56           | 993.51   |
| KV 06 K     | 6 modules, with 4-pin PE/N terminals | approx. RAL 9016 | 1         | 56           | 1,192.21 |

Price incl. VAT - recommended price in Euro



## WALL-MOUNTED DAMP-AREA DISTRIBUTORS – IP 55

Proof against spray water  
for exterior areas.

- ⇒ Small distributors for equipment up to 63A
- ⇒ With door of transparent, impact-resistant, weather-resistant polycarbonate
- ⇒ Upper and lower section of high-quality PS plastic



15.2



15.1

○ incl. PE/N terminals

Dimensions in mm:

| Dimensions | H   | W   | D  |
|------------|-----|-----|----|
| KV 04 WD   | 180 | 125 | 90 |
| KV 06 WD   | 180 | 160 | 90 |
| KV 10 WD   | 180 | 230 | 90 |

Rated insulation voltage: 400 V

Rated current: 163 A max

Short-circuit stability: 4 kV

Electromagnetic environment: 1



### Wall-mounted damp-area distributors – IP 55

| Article No. | Version           | Colour           | Unit qty. | €/100    |
|-------------|-------------------|------------------|-----------|----------|
| KV 04 WD    | 1-row, 4 modules  | approx. RAL 7035 | 1         | 2,627.28 |
| KV 06 WD    | 1-row, 6 modules  | approx. RAL 7035 | 1         | 3,731.18 |
| KV 10 WD    | 1-row, 10 modules | approx. RAL 7035 | 1         | 4,835.09 |



15.3

Price incl. VAT - recommended price in Euro

### The new modular small distributor system housing.

- ⇒ Small distributors for equipment up to 63A
- ⇒ Reliable version of impact-resistant, weather-resistant polystyrol
- ⇒ With pre-stamped openings on all 4 sides and rear wall
- ⇒ With integral level for fast and professional alignment
- ⇒ Replaceable, transparent, individual doors, for left or right opening, optionally also sealable and lockable
- ⇒ 150 mm additional connection room for AR variants for incoming and outgoing wiring
- ⇒ Several system housing can be combined as required and fitted in series
- ⇒ incl. cable trim for neat covering of the cable inlets
- ⇒ incl. PE/N terminals



## System housing – IP 65

| Article No.   | Version               | Dimensions in mm LxWxD | Unit qty. | Palette | €/100     |
|---------------|-----------------------|------------------------|-----------|---------|-----------|
| <b>APV 14</b> | 1-row, 1 x 14 modules | 300 x 300 x 142        | 1         | 44      | 7,506.52  |
| <b>APV 28</b> | 2-row, 2 x 14 modules | 450 x 300 x 142        | 1         | 44      | 11,701.35 |
| <b>APV 42</b> | 3-row, 3 x 14 modules | 600 x 300 x 142        | 1         | 33      | 15,896.17 |
| <b>APV 56</b> | 4-row, 4 x 14 modules | 750 x 300 x 142        | 1         | 22      | 20,311.77 |
| <b>APV 70</b> | 5-row, 5 x 14 modules | 900 x 300 x 142        | 1         | 22      | 24,727.38 |

17.1



## With large connection space

⇒ 150 mm additional connection space for incoming and outgoing wiring

| Article No.      | Version               | Dimensions in mm LxWxD | Unit qty. | Palette | €/100     |
|------------------|-----------------------|------------------------|-----------|---------|-----------|
| <b>APV 14 AR</b> | 1-row, 1 x 14 modules | 450 x 300 x 142        | 1         | 44      | 9,603.94  |
| <b>APV 28 AR</b> | 2-row, 2 x 14 modules | 600 x 300 x 142        | 1         | 33      | 13,798.76 |
| <b>APV 42 AR</b> | 3-row, 3 x 14 modules | 750 x 300 x 142        | 1         | 22      | 17,993.58 |
| <b>APV 56 AR</b> | 4-row, 4 x 14 modules | 900 x 300 x 142        | 1         | 22      | 22,409.18 |

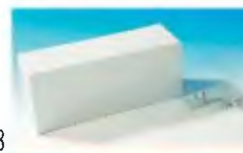
17.2



## Accessories and replacement parts

| Article No.   | Version  | Unit qty. | €/100    |
|---------------|--|-----------|----------|
| <b>AKEF-1</b> | Cable trim with attachment clips (supplied with original unit) | 1         | 1,103.89 |

17.3



| Article No.      | Version                               | Unit qty. | €/100    |
|------------------|---------------------------------------|-----------|----------|
| <b>APV 14 TK</b> | Replacement door, transparent, clear  | 1         | 1,214.29 |
| <b>APV 14 TR</b> | Replacement door, transparent, smoked | 1         | 1,214.29 |

17.4



| Article No.   | Version                          | Unit qty. | €/100 |
|---------------|----------------------------------|-----------|-------|
| <b>DMS 20</b> | Double-membrane connections M20  | 10        | 35.32 |
| <b>DMS 21</b> | Double-membrane connections Pg21 | 5         | 42.88 |

17.5



| Article No. | Version             | Unit qty. | €/100    |
|-------------|---------------------|-----------|----------|
| <b>TS 3</b> | Door lock, complete | 1         | 3,532.48 |

17.6



| Article No.     | Version                                   | Unit qty. | €/100  |
|-----------------|---|-----------|--------|
| <b>PEN 24 A</b> | PE/N 24 terminals, right and left fitting | 1         | 993.52 |
| <b>PE 36 A</b>  | PE 36 terminals, right and left fitting   | 1         | 993.52 |
| <b>N 36 A</b>   | N 36 terminals, right and left fitting    | 1         | 993.52 |

17.7



| Article No.  | Version   | Unit qty. | €/100  |
|--------------|---|-----------|--------|
| <b>HS-AK</b> | Main rail, 250 mm long, incl. spacer and 2 tension fittings | 1         | 772.73 |

17.8



Price incl. VAT - recommended price in Euro

## CEILING AND SOCKET COVERS

### The socket cover with VDE-approved ceiling outlet.

- ⇒ Made of impact-resistant plastic
- ⇒ Lower section with pre-stamped cable outlets
- ⇒ Including 2-piece tension relief
- ⇒ Snap-on cover



18.1

#### Socket covers

| Article No. | Version            | Colour           | Unit qty. | Outer carton | €/100 |
|-------------|--------------------|------------------|-----------|--------------|-------|
| DB 1 W      | Ø75 mm, 25 mm deep | approx. RAL 9016 | 1         | 300          | 77.27 |
| DB 1 B      | Ø75 mm, 25 mm deep | brown            | 1         | 300          | 77.27 |
| DB 1 S      | Ø75 mm, 25 mm deep | black            | 1         | 300          | 77.27 |



18.2

#### Cooker connection socket

- Made of impact-resistant plastic
- Suitable for surface or undersurface installation
- With claw fittings
- 5 colour-coded terminals, 6 mm<sup>2</sup>
- Snap-in cover

| Article No. | Version         | Colour           | Unit qty. | Outer carton | €/100  |
|-------------|-----------------|------------------|-----------|--------------|--------|
| HAD 01      | 80 x 80 x 25 mm | approx. RAL 9016 | 20        | 320          | 520.54 |



18.3

## WM JUNCTION BOXES – IP 30

### Junction boxes for interior installation

- ⇒ For fast and easy wall-mounting
- ⇒ Closed lower section with pre-stamped cable inlets
- ⇒ With fitted 5-pin VDE socket terminals
- ⇒ Cover with quick-lock screw and pre-stamped cable inlets



18.5



18.4

#### WM junction boxes – IP 30

| Article No. | Version         | Colour           | Unit qty. | Outer carton | €/100  |
|-------------|-----------------|------------------|-----------|--------------|--------|
| E 180 W     | 75 x 75 x 25 mm | approx. RAL 9016 | 10        | 250          | 143.51 |
| E 181 W     | 55 x 55 x 25 mm | approx. RAL 9016 | 10        | 400          | 121.42 |

Price incl. VAT - recommended price in Euro



18.6

## WM DAMP-AREA JUNCTION BOXES – IP 54

The proven junction box for professional wall-mounting in damp areas.

- ⇒ Easy to install
- ⇒ With 12 self-sealing cut-out cable inlets
- ⇒ External fitting brackets with oval holed for easy alignment
- ⇒ Polypropylene cover, polyethylene housing
- ⇒ Colour: approx. RAL 7035 (grey)



19.1

### WM damp-area junction boxes – IP 54

| Article No. | Version   | Unit qty. | Outer carton | €/100  |
|-------------|---|-----------|--------------|--------|
| E 126       | 75 x 37 x 40 mm   | 20        | 300          | 86.10  |
| E 126-100   | 75 x 37 x 40 mm, loose                                    | -         | 100          | 81.68  |
| E 126 D     | 75 x 37 x 40 mm, cover not fitted                         | 20        | 300          | 75.07  |
| E 126 K     | 75 x 37 x 40 mm, with fitted 5-pin VDE socket terminals   | 20        | 300          | 130.26 |
| E 125       | 75 x 75 x 40 mm   | 20        | 200          | 86.10  |
| E 125-100   | 75 x 75 x 40 mm, loose                                    | -         | 100          | 81.68  |
| E 125 D     | 75 x 75 x 40 mm, cover not fitted                         | 20        | 200          | 75.07  |
| E 125 K     | 75 x 75 x 40 mm, with fitted 5-pin VDE socket terminals   | 20        | 200          | 130.26 |
| E 113       | 85 x 85 x 40 mm   | 10        | 150          | 97.14  |
| E 113-150   | 85 x 85 x 40 mm, loose                                    | -         | 150          | 92.73  |
| E 113 D     | 85 x 85 x 40 mm, cover not fitted                         | 10        | 150          | 88.31  |
| E 113 K     | 85 x 85 x 40 mm, with fitted 5-pin VDE socket terminals   | 10        | 150          | 141.30 |
| E 114       | 100 x 100 x 40 mm   | 10        | 100          | 112.59 |
| E 114-100   | 100 x 100 x 40 mm, loose                                  | -         | 100          | 106.18 |
| E 114 D     | 100 x 100 x 40 mm, cover not fitted                       | 10        | 100          | 103.76 |
| E 114 K     | 100 x 100 x 40 mm, with fitted 5-pin VDE socket terminals | 10        | 100          | 156.77 |

19.2



19.3



## WM DAMP-AREA JUNCTION BOXES – IP 54

With integral inlet membrane

- ⇒ Easy to install
- ⇒ With integral inlet membranes at four sides
- ⇒ Simple use - no need of special tools
- ⇒ VDE certified
- ⇒ High competition value

### All advantages at a glance:

- ⇒ Less time consuming
- ⇒ Significant ease of mounting
- ⇒ **No loosening of the cover**
- ⇒ Integrated cable connector
- ⇒ Membrane inlet at the back side

**Neuheit**  
Innovation, that will amaze you

**Aqua-Line**



19.5



19.4

### WM damp-area junction boxes – IP 54

| Article No. | Version         | Unit qty. | Outer carton | €/100  |
|-------------|-----------------|-----------|--------------|--------|
| E 1000      | 75 x 75 x 40 mm | 20        | 200          | 151.60 |
| E 1100      | 85 x 85 x 40 mm | 10        | 150          | 158.00 |

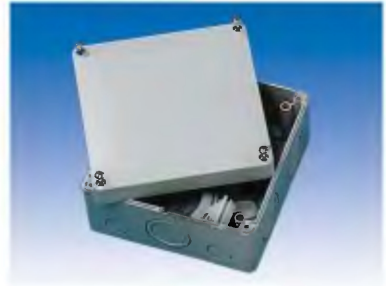
Price incl. VAT - recommended price in Euro

19.6



## The junction box for higher demands and heavy usage conditions.

- ⇒ Low-inflammability, fracture-resistant material
- ⇒ UV and weather-resistant
- ⇒ With pre-stamped cable inlets or complete with fitted twist nipples
- ⇒ For use with IP 54 twist nipples and IP 65 screw fittings
- ⇒ Cover with stainless steel screws
- ⇒ Insulation and sealing stoppers included



20.1



20.2

CE □ ▽  IP 54, IP 65   

## With pre-stamped cable inlets

→ with internal stepped nipples

| Article No. | Version            | Dimensions in mm | Colour           | Unit qty. | Outer carton | €/100    |
|-------------|--------------------|------------------|------------------|-----------|--------------|----------|
| FK 110      | 4 mm <sup>2</sup>  | 80 x 80 x 63     | approx. RAL 7035 | 1         | 70           | 419.48   |
| FK 111      | 4 mm <sup>2</sup>  | 80 x 80 x 63     | approx. RAL 9016 | 1         | 70           | 529.87   |
| FK 210      | 6 mm <sup>2</sup>  | 110 x 110 x 67   | approx. RAL 7035 | 1         | 30           | 861.05   |
| FK 211      | 6 mm <sup>2</sup>  | 110 x 110 x 67   | approx. RAL 9016 | 1         | 30           | 1,015.59 |
| FK 310      | 10 mm <sup>2</sup> | 140 x 140 x 79   | approx. RAL 7035 | 1         | 24           | 1,214.29 |
| FK 311      | 10 mm <sup>2</sup> | 140 x 140 x 79   | approx. RAL 9016 | 1         | 24           | 1,412.98 |
| FK 410      | 16 mm <sup>2</sup> | 180 x 180 x 91   | approx. RAL 7035 | 1         | 12           | 1,633.77 |
| FK 411      | 16 mm <sup>2</sup> | 180 x 180 x 91   | approx. RAL 9016 | 1         | 12           | 1,876.66 |



2.1

## With fitted stepped nipples

| Article No. | Version            | Dimensions in mm | Colour           | Unit qty. | Outer carton | €/100    |
|-------------|--------------------|------------------|------------------|-----------|--------------|----------|
| FK 120      | 4 mm <sup>2</sup>  | 80 x 80 x 63     | approx. RAL 7035 | 1         | 70           | 463.64   |
| FK 121      | 4 mm <sup>2</sup>  | 80 x 80 x 63     | approx. RAL 9016 | 1         | 70           | 574.02   |
| FK 220      | 6 mm <sup>2</sup>  | 110 x 110 x 67   | approx. RAL 7035 | 1         | 30           | 905.20   |
| FK 221      | 6 mm <sup>2</sup>  | 110 x 110 x 67   | approx. RAL 9016 | 1         | 30           | 1,059.74 |
| FK 320      | 10 mm <sup>2</sup> | 140 x 140 x 79   | approx. RAL 7035 | 1         | 24           | 1,302.60 |
| FK 321      | 10 mm <sup>2</sup> | 140 x 140 x 79   | approx. RAL 9016 | 1         | 24           | 1,501.30 |
| FK 420      | 16 mm <sup>2</sup> | 180 x 180 x 91   | approx. RAL 7035 | 1         | 12           | 1,722.08 |
| FK 421      | 16 mm <sup>2</sup> | 180 x 180 x 91   | approx. RAL 9016 | 1         | 12           | 1,964.94 |



2.2

## Covers

| Article No. | Version                      | Dimensions in mm | Colour                          | Unit qty. | €/100  |
|-------------|------------------------------|------------------|---------------------------------|-----------|--------|
| FK 132      | for 4 mm <sup>2</sup> boxes  | 80 x 80 x 17     | transparent                     | 1         | 191.25 |
| FK 232      | for 6 mm <sup>2</sup> boxes  | 110 x 110 x 19   | transparent                     | 1         | 287.01 |
| FK 332      | for 10 mm <sup>2</sup> boxes | 140 x 140 x 19   | transparent                     | 1         | 441.56 |
| FK 432      | for 16 mm <sup>2</sup> boxes | 180 x 180 x 22   | transparent                     | 1         | 682.34 |
| FK 133      | for 4 mm <sup>2</sup> boxes  | 80 x 80 x 17     | red, for emergency power supply | 1         | 220.78 |
| FK 233      | for 6 mm <sup>2</sup> boxes  | 110 x 110 x 19   | red, for emergency power supply | 1         | 331.18 |
| FK 333      | for 10 mm <sup>2</sup> boxes | 140 x 140 x 19   | red, for emergency power supply | 1         | 507.80 |
| FK 433      | for 16 mm <sup>2</sup> boxes | 180 x 180 x 22   | red, for emergency power supply | 1         | 772.73 |



2.3

## Stepped nipples

| Article No. | Version    | Colour           | Unit qty. | €/100 |
|-------------|------------|------------------|-----------|-------|
| STM 25      | M25 metric | approx. RAL 7035 | 20        | 35.32 |
| STM 32      | M32 metric | approx. RAL 7035 | 20        | 48.58 |
| STM 40      | M40 metric | approx. RAL 7035 | 20        | 62.18 |



Price incl. VAT - recommended price in Euro

2.4

## CABLE HOLDERS

For easy laying of several cables along ceilings, suspended ceilings and walls.

- ⇒ Installation with or without universal holders
- ⇒ With clip-fasteners for fast and easy cable insertion
- ⇒ High material elasticity
- ⇒ Material: polyamide, flame-resistant, halogen- and silicon-free
- ⇒ Colour: approx. RAL 7035



22.1



22.2



22.3



22.4



For flush wall-mounting

22.5

### Cable holders

| Article No. | Version   | Capacity                         | Unit qty. | Outer carton | €/100  |
|-------------|---|----------------------------------|-----------|--------------|--------|
| KSH 15      | Cable holder  | 15 x NYM 3 x 1,5 mm <sup>2</sup> | 50        | 400          | 70.65  |
| KSH 30      | Cable holder  | 30 x NYM 3 x 1,5 mm <sup>2</sup> | 25        | 250          | 128.05 |
| KSH 30 B    | Cable holder, flush wall-mounting                       | 30 x NYM 3 x 1,5 mm <sup>2</sup> | 20/carton | 320          | 137.77 |
| UH 1        | Universal holder for KSH 15 and KSH 30                  |                                  | 50        | 3000         | 18.90  |
| UH 1 SD     | Universal holder with pre-assembled wall plug 6 x 50 mm |                                  | 50        | 2000         | 39.32  |

Price incl. VAT - recommended price in Euro



22.6



22.7

## RETAINING BRACKETS

For fast and neat laying of cables along ceilings, suspended ceilings and walls.

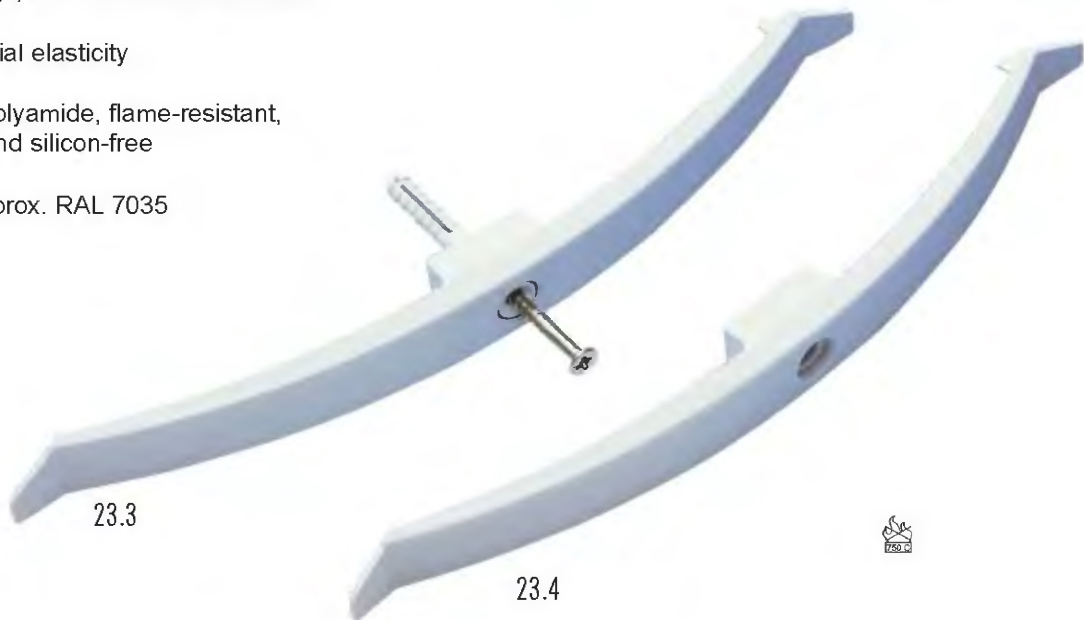
- ⇒ Flat version for low installation height
- ⇒ Wide and stable bracket with lip for easy insertion or removal of cables
- ⇒ Quick and easy installation using nails or wall plugs, Ø 6 mm attachment holes
- ⇒ High material elasticity
- ⇒ Material: polyamide, flame-resistant, halogen- and silicon-free
- ⇒ Colour: approx. RAL 7035



23.1



23.2



23.3

23.4



### Retaining brackets

| Article No. | Version               | Capacity                         | Unit qty. | Outer carton | €/100 |
|-------------|-----------------------|----------------------------------|-----------|--------------|-------|
| FT 8        | without wall plug     | 8 x NYM 3 x 1,5 mm <sup>2</sup>  | 50        | 1200         | 25.60 |
| FT 8 N      | with Ø 6 mm wall plug | 8 x NYM 3 x 1,5 mm <sup>2</sup>  | 25        | 250          | 43.94 |
| FT 10       | without wall plug     | 10 x NYM 3 x 1,5 mm <sup>2</sup> | 50        | 800          | 28.70 |
| FT 10 N     | with Ø 6 mm wall plug | 10 x NYM 3 x 1,5 mm <sup>2</sup> | 25        | 250          | 45.68 |
| FT 16       | without wall plug     | 16 x NYM 3 x 1,5 mm <sup>2</sup> | 50        | 600          | 49.01 |
| FT 16 N     | with Ø 6 mm wall plug | 16 x NYM 3 x 1,5 mm <sup>2</sup> | 25        | 100          | 69.54 |



23.5



23.6

Price incl. VAT - recommended price in Euro

## ISO PRESSURE CLAMPS

The proven clamps for fast and easy attachment of cables.

- ⇒ Size 6-16 mm
- ⇒ With centring mark
- ⇒ For screw-fitting, wall plugs or gluing
- ⇒ M6 thread
- ⇒ Material: impact-proof plastic
- ⇒ Colour: approx. RAL 7035



24.1 CE



24.2

### ISO pressure clamps

| Article No. | Version | Unit qty. | Outer carton | €/100 |
|-------------|---------|-----------|--------------|-------|
| E 102       | one-way | 100       | 5000         | 20.32 |



24.3

### Cable clamps

- ⇒ Size 8-14 mm
- ⇒ For cables Ø 4-6 mm
- ⇒ Material: impact-proof plastic
- ⇒ Colour: black

| Article No. | Version | Unit qty. | Outer carton | €/100 |
|-------------|---------|-----------|--------------|-------|
| E 104       | one-way | 50        | 5000         | 40.85 |



Price incl. VAT - recommended price in Euro

24.4

## NAIL WASHERS

For easy attachment of cables to masonry, ceilings and walls.

- ⇒ With hardened, galvanised nails
- ⇒ Colour: transparent



25.1



25.2

### Nail washers

| Article No. | Version | Nail / Ø x length | Unit qty. | €/100 |
|-------------|---------|-------------------|-----------|-------|
| NS 28/230   | Ø 28 mm | 2 x 30 mm         | 100       | 9.06  |
| NS 28/240   | Ø 28 mm | 2 x 40 mm         | 100       | 9.27  |
| NS 28/250   | Ø 28 mm | 2 x 50 mm         | 100       | 9.28  |
| NS 35/340   | Ø 35 mm | 3 x 40 mm         | 100       | 13.03 |
| NS 35/350   | Ø 35 mm | 3 x 50 mm         | 100       | 15.46 |
| NS 35/360   | Ø 35 mm | 3 x 60 mm         | 100       | 17.44 |
| NS 35/370   | Ø 35 mm | 3 x 70 mm         | 100       | 21.63 |



25.3

## NAIL CLAMPS

For fast attachment of cables in all areas.

- ⇒ Full nail alignment
- ⇒ High impact and break resistance
- ⇒ Wide jaws for firm attachment
- ⇒ With hardened, galvanised steel nails
- ⇒ Material: polypropylene



25.4



25.5

### Nail clamps

| Article No. | Version    | Nail / Ø x length | Colour           | Unit qty. | Outer carton | €/100 |
|-------------|------------|-------------------|------------------|-----------|--------------|-------|
| E 160 P     | 4 - 7 mm   | 2 x 23 mm         | approx. RAL 7035 | 200       | 6400         | 3.65  |
| E 160 PW    | 4 - 7 mm   | 2 x 23 mm         | approx. RAL 9016 | 200       | 6400         | 4.00  |
| E 161 P     | 7 - 11 mm  | 2 x 35 mm         | approx. RAL 7035 | 150       | 3200         | 4.09  |
| E 161 PW    | 7 - 11 mm  | 2 x 35 mm         | approx. RAL 9016 | 150       | 3200         | 4.74  |
| E 162 P     | 10 - 14 mm | 2 x 40 mm         | approx. RAL 7035 | 100       | 3200         | 6.39  |
| E 162 PW    | 10 - 14 mm | 2 x 40 mm         | approx. RAL 9016 | 100       | 3200         | 7.76  |



25.6



25.7

Price incl. VAT - recommended price in Euro

## The proven version in tested top quality.

- ⇒ With break-out openings for cables and pipes up to Ø 20 mm
- ⇒ Will not twist, thanks to fully insulated tunnel connection with insert coupling
- ⇒ Guaranteed standard combination distance of 71 mm
- ⇒ For screw-fitting and spreader fitting
- ⇒ 60 mm separating distance for fitting screws
- ⇒ Material: polystyrol, flame-resistant, halogen- and silicon-free



26.2



26.1

- In addition to the proven square tunnel connection, sockets are also available with round connections

CE U IP 20

### Socket boxes with tunnel connection Ø 60 mm

○ Depth 41 mm

| Article No. | Version  | Unit qty. | Outer carton | Palette | €/100 |
|-------------|--|-----------|--------------|---------|-------|
| E 106       | without fitting screws, with 2 screw spikes                  | 20        | 300          | 4800    | 20.97 |
| E 106 K     | without fitting screws, round connection with 4 screw spikes | 20        | 300          | 4800    | 20.97 |
| E 106 S     | with fitting screws  | 20        | 300          | 4800    | 38.63 |
| E 106 KS    | with fitting screws, round connection                        | 20        | 300          | 4800    | 38.63 |
| E 106-500   | loose  | -         | 500          | 6000    | 15.45 |
| E 106 N     | with nail bracket  | 20        | 200          | 3200    | 23.18 |
| E 106 NS    | with nail bracket and fitting screws                         | 20        | 200          | 3200    | 40.84 |

26.3



### Socket boxes with tunnel connection Ø 60 mm, deep version

| Article No. | Version  | Unit qty. | Outer carton | Palette | €/100 |
|-------------|--|-----------|--------------|---------|-------|
| E 107       | without fitting screws, with 4 screw spikes                  | 20        | 200          | 3200    | 27.59 |
| E 107 K     | without fitting screws, round connection with 2 screw spikes | 20        | 200          | 3200    | 27.59 |
| E 107 S     | with fitting screws  | 20        | 200          | 3200    | 45.26 |
| E 107 KS    | with fitting screws, round connection                        | 20        | 200          | 3200    | 45.26 |
| E 107-400   | loose  | -         | 400          | 4800    | 20.97 |
| E 107 N     | with nail bracket  | 20        | 180          | 2880    | 39.29 |
| E 107 NS    | with nail bracket and fitting screws                         | 20        | 180          | 2880    | 50.97 |

26.4



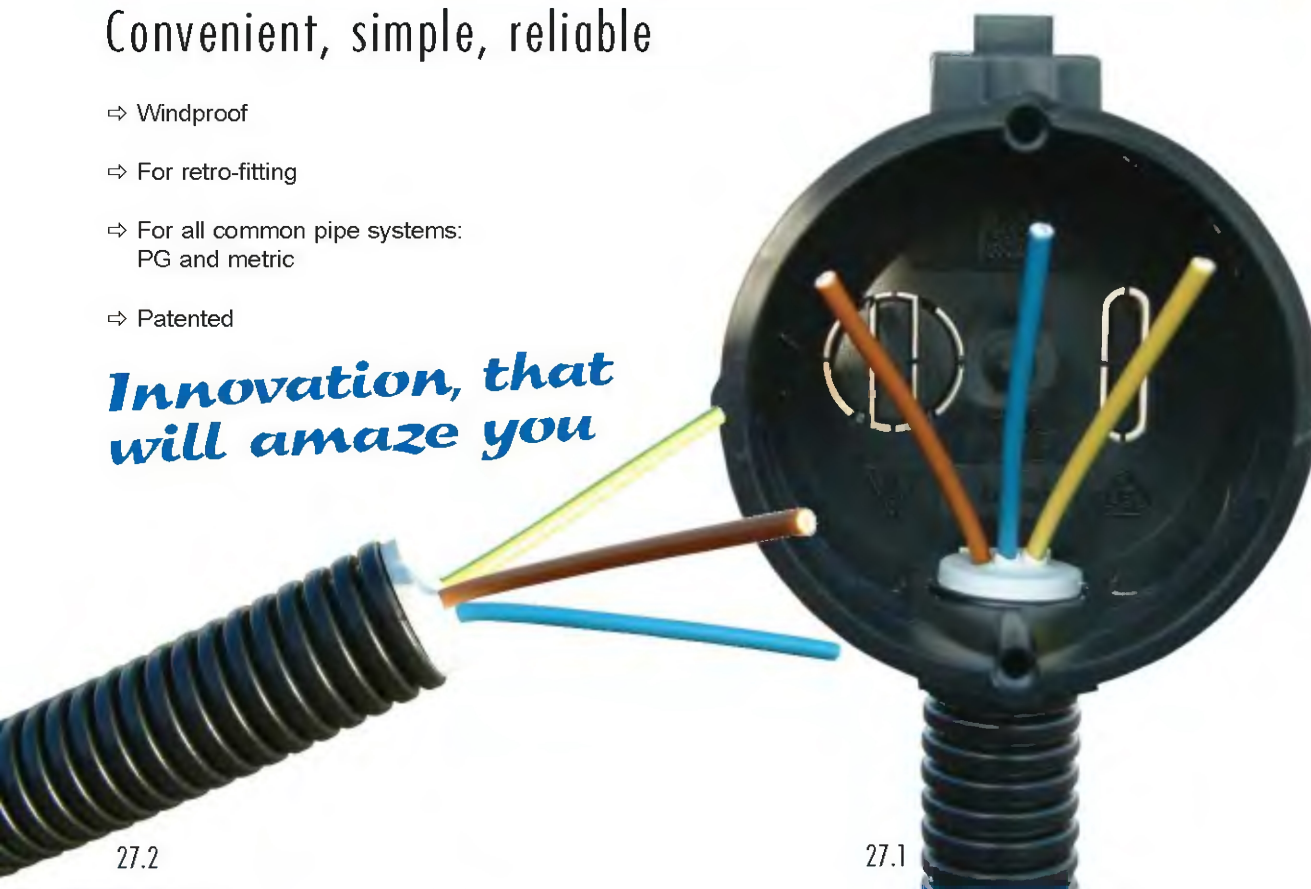
Price incl. VAT - recommended price in Euro

## CONNECTORS WITH PRESS-OUT MEMBRANES

### Convenient, simple, reliable

- ⇒ Windproof
- ⇒ For retro-fitting
- ⇒ For all common pipe systems:  
PG and metric
- ⇒ Patented

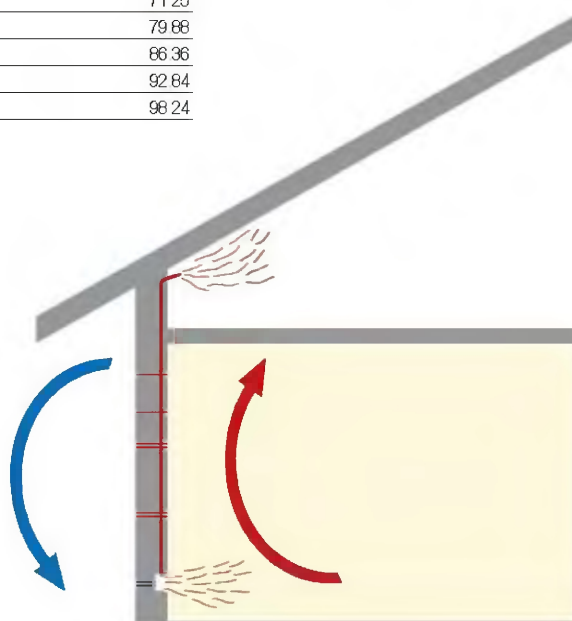
*Innovation, that  
will amaze you*



### Connectors with press-out membranes

| Article No. | Version | Unit qty. | €/100 |
|-------------|---------|-----------|-------|
| E 06        | M 16    | 50        | 71.25 |
| E 07        | M 20    | 50        | 79.88 |
| E 08        | M 25    | 50        | 86.36 |
| E 09        | M 32    | 50        | 92.64 |
| E 10        | M 40    | 50        | 98.24 |

Until now, it has always been extremely difficult and time-consuming to make an undersurface switch socket windproof. Specialists know that annoying turbulences can get into the socket via the plastic tube due to the so-called "chimney effect".



Price incl. VAT - recommended price in Euro

## Tunnel connections

For proper separation of low-voltage and 230 V socket combinations.

- ⇒ With pre-stamped break-out opening inside connection
- ⇒ Separating distance increased from 71 mm to 91 mm

28.1



| Article No. | Version                  | Unit qty. | Outer carton | Palette | €/100 |
|-------------|--------------------------|-----------|--------------|---------|-------|
| E 159       | for socket boxes Ø 60 mm | 50        | 3000         |         | 24.06 |

28.2

## Socket boxes without tunnel connection Ø 60 mm

- Depth: 41 mm

| Article No. | Version  | Unit qty. | Outer carton | Palette | €/100 |
|-------------|--|-----------|--------------|---------|-------|
| E 108       | without tunnel connection                      | 20        | 300          | 4800    | 19.87 |
| E 108 S     | without tunnel connection, with fitting screws | 20        | 300          | 4800    | 37.53 |

28.3



## Junction boxes Ø 70 mm

- Depth: 40 mm

| Article No. | Version                                  | Unit qty. | Outer carton | Palette | €/100 |
|-------------|--|-----------|--------------|---------|-------|
| E 110       | without cover screws and cover           | 20        | 300          | 4800    | 20.98 |
| E 110 S     | with cover screws, without cover         | 20        | 300          | 4800    | 38.63 |
| E 110 SD    | with cover screws and cover, unassembled | 20        | 300          | 4800    | 63.44 |

28.4



## Connection socket with lateral terminal spaces

- Dimensions 110 x 71 x 45 mm
- with 2 x 15 mm fitting screws

| Article No. | Version | Unit qty. | Outer carton | Palette | €/100  |
|-------------|---------|-----------|--------------|---------|--------|
| E 500       |         | 20        | 300          | 4800    | 198.71 |

28.5



## Plaster adjustment rings

For adjusting the depth of too deep sockets and junction boxes.

- ⇒ With pre-assembled 15 mm screws
- ⇒ Screw separation distance 60 mm or 67 mm
- ⇒ Plaster adjustment rings of the same diameter can be fitted on top of each other

28.6



CE U IP 20

| Article No. | Version                    | Depth | Unit qty. | Palette | €/100 |
|-------------|----------------------------|-------|-----------|---------|-------|
| E 130       | for sockets Ø 60 mm        | 12 mm | 50        | 1200    | 30.91 |
| E 131       | for junction boxes Ø 70 mm | 12 mm | 50        | 1000    | 35.32 |
| E 132       | for sockets Ø 60 mm        | 24 mm | 50        | 1000    | 39.74 |
| E 133       | for junction boxes Ø 70 mm | 24 mm | 50        | 800     | 44.15 |

Price incl. VAT - recommended price in Euro

28.7



## Signal covers

For easy location of sockets and junction boxes after plastering.

- ⇒ Protects the inside of the socket, screw spikes and screw heads when plastering
- ⇒ After plastering, simply knock the cover inward into the socket and remove
- ⇒ Reusable



29.1



29.2

| Article No. | Version                    | Unit qty. | Outer carton | €/100 |
|-------------|----------------------------|-----------|--------------|-------|
| E 120       | for sockets Ø 60 mm        | 50        | 1500         | 20.98 |
| E 121       | for junction boxes Ø 70 mm | 50        | 1000         | 22.52 |

## Spring covers

For fast and convenient covering of sockets and junction boxes.

- ⇒ Stable, impact-proof plastic design
- ⇒ Wide fitting springs
- ⇒ With bevelled edge for flush fitting against the wall
- ⇒ Colour: approx. RAL 9016

| Article No. | Version                    | Unit qty. | Outer carton | Palette | €/100 |
|-------------|----------------------------|-----------|--------------|---------|-------|
| E 109 A     | for sockets Ø 60 mm        | 50        | 1000         | 16000   | 19.20 |
| E 109       | for junction boxes Ø 70 mm | 50        | 800          | 12800   | 20.32 |



29.3

## Universal screw cover

For VDE-approved covering of sockets and junction boxes.

- ⇒ Ø 92 mm, for sockets Ø 60 mm and junction boxes Ø 70 mm
- ⇒ With 5 pre-stamped screw holes for double- or single-screw attachment
- ⇒ with 2 x 15 mm fitting screws
- ⇒ With pre-stamped cable outlet
- ⇒ With bevelled edge for flush fitting against the wall
- ⇒ Colour: approx. RAL 9016



| Article No. | Unit qty. | Outer carton | €/100 |
|-------------|-----------|--------------|-------|
| E 112       | 50        | 1000         | 32.00 |



29.4

Price incl. VAT - recommended price in Euro

## JUNCTION BOXES

For neat wiring and circuit separation.

- ⇒ With break-out openings for cables and pipes up to Ø 38 mm
- ⇒ Size 150 x 150 mm, suitable for subsequent installation of 35 mm norm carrier rails or terminals
- ⇒ incl. cover screws and cover, approx. RAL 9016
- ⇒ Material: polystyrol, flame-resistant, halogen- and silicon-free
- ⇒ Depth: 50 mm

30.1

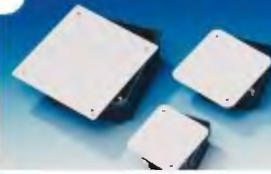


CE IP 20

### Undersurface junction boxes

| Article No. | Version                               | Unit qty. | Outer carton | €/100  |
|-------------|---------------------------------------|-----------|--------------|--------|
| E 140       | 80 x 80 mm, unassembled               | 10        | 200          | 163.37 |
| E 141       | 100 x 100 mm, unassembled             | 10        | 150          | 185.45 |
| E 142       | 150 x 150 mm, unassembled, not to VDE | 10        | 60           | 375.33 |

30.2



### Screw covers for junction boxes

| Article No. | Version                         | Unit qty. | €/100  |
|-------------|---------------------------------|-----------|--------|
| E 140 D     | for junction boxes 80 x 80 mm   | 10        | 50.78  |
| E 141 D     | for junction boxes 100 x 100 mm | 10        | 56.37  |
| E 142 D     | for junction boxes 150 x 150 mm | 10        | 154.54 |

30.3



### Fitting screws

| Article No. | Version     | Unit qty. | €/100 |
|-------------|-------------|-----------|-------|
| E 152/16    | 3,2 x 16 mm | 100       | 3.42  |
| E 152/25    | 3,2 x 25 mm | 100       | 5.52  |
| E 152/40    | 3,2 x 40 mm | 100       | 11.04 |

30.4



### Undersurface wall outlet socket

For VDE-approved installation of wall lamps.

- ⇒ With integral plug for attachment of wall lamps
- Integral break-out openings for cables and pipes
- With cover
- Dimensions: 60 x 31 x 31 (LxWxD)

| Article No. | Unit qty. | Outer carton | €/100 |
|-------------|-----------|--------------|-------|
| WAD         | 25        | 500          | 34.87 |

Price incl. VAT - recommended price in Euro

30.5

CE IP 20



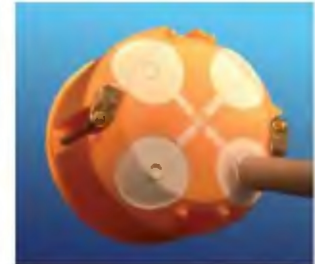
## CAVITY WALL SOCKETS WITH PRESS-OUT MEMBRANES

We set completely new standards! The brand-new generation of cavity wall sockets.

- ⇒ Windproof
- ⇒ Easy to install
- ⇒ Easy fitting without expensive tools
- ⇒ Improved noise insulation
- ⇒ Certified and VDE-approved
- ⇒ Tested to the "blower-door test"
- ⇒ Unbeatable in price and performance



31.1



31.2

⇒ With integral press-out membranes

### Cavity wall sockets E 2000 / E 2100

- Depth: 47 mm

| Article No. | Version                                 | Colour | Unit qty. | Outer carton | Palette | €/100  |
|-------------|---|--------|-----------|--------------|---------|--------|
| E 2000      | Cavity wall socket E 2000               | orange | 20        | 300          | 6000    | 129.54 |
| E 2100      | Cavity wall socket E 2100, halogen-free | white  | 20        | 300          | 6000    | 194.31 |

31.3



### Cavity wall sockets E 3500 / E 3600

- Depth: 61 mm

| Article No. | Version                                | Colour | Unit qty. | Outer carton | Palette | €/100  |
|-------------|--|--------|-----------|--------------|---------|--------|
| E 3500      | Cavity wall socket E 3500              | orange | 20        | 240          | 4800    | 151.13 |
| E 3600      | Cavity wall socket E 3600 halogen-free | white  | 20        | 240          | 4800    | 250.49 |

31.4



### Hohlwandschalterdosen E 4000 / 4100

- Depth: 61 mm
- ⇒ Now with inlet of 25 mm and sidewise guided press-out membranes.
- ⇒ Perfect for prefabricated houses.

| Article No. | Version                                | Colour | Unit qty. | Outer carton | Palette | €/100  |
|-------------|--|--------|-----------|--------------|---------|--------|
| E 4000      | Cavity wall socket E 4000              | orange | 20        | 240          | 4800    | 160,85 |
| E 4100      | Cavity wall socket E 4100 halogen-free | white  | 20        | 240          | 4800    | 263,40 |

Price incl. VAT - recommended price in Euro

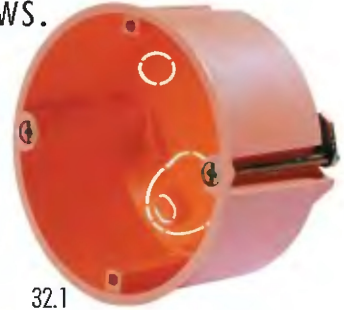
31.5



## CAVITY WALL SOCKETS AND JUNCTION BOXES

The proven version with metal retaining claws.

- ⇒ Save time and costs with the fast installation system
- ⇒ For panel thicknesses 7-35 mm
- ⇒ With pre-assembled fitting screws, separating distance 60 mm
- ⇒ Connection fittings for fully-insulated through-wiring
- ⇒ 71 mm combination separating distance
- ⇒ With break-out openings for cables and pipes
- ⇒ Material: polypropylene



32.1

CE IP 30

### Sockets Ø 60 mm

| Article No.       | Version              | Depth | Colour | Unit qty. | Outer carton | Palette | €/100    |
|-------------------|----------------------|-------|--------|-----------|--------------|---------|----------|
| <b>E 135</b>      | without VDE approval | 35 mm | orange | 20        | 300          | 6000    | 150.12   |
| <b>E 135 lose</b> | loose                | 35 mm | orange | -         | 600          | 7200    | 143.37   |
| <b>E 135</b>      |                      |       |        |           |              |         |          |
| <b>E 115</b>      |                      | 47 mm | orange | 20        | 300          | 6000    | 92.73    |
| <b>E 115 lose</b> | loose                | 47 mm | orange | -         | 500          | 6000    | 88.31    |
| <b>E 115 WD</b>   | windproof            | 47 mm | orange | 20        | 300          | 6000    | 103.76   |
| <b>E 115 GE</b>   | screened             | 47 mm | orange | 20        | 300          | 6000    | 927.28   |
| <b>E 117</b>      |                      |       |        |           |              |         |          |
| <b>E 117</b>      |                      | 61 mm | orange | 20        | 240          | 4800    | 103.76   |
| <b>E 117 lose</b> | loose                | 61 mm | orange | -         | 400          | 4800    | 99.35    |
| <b>E 117 WD</b>   | windproof            | 61 mm | orange | 20        | 240          | 4800    | 117.00   |
| <b>E 117 GE</b>   | screened             | 61 mm | orange | 20        | 240          | 4800    | 1,103.90 |



32.2

### Bi-metal hole-cutter

- ⇒ For HW sockets 68 mm
- ⇒ Max. cutting depth 50 mm
- ⇒ For all workable metals, wood, plastic, plasterboard

| Article No.  |             | Unit qty. | €/1   |
|--------------|-------------|-----------|-------|
| <b>LS 68</b> | Hole-cutter | 1         | 34.00 |

| Article No.       |                    | Unit qty. | €/1   |
|-------------------|--------------------|-----------|-------|
| <b>LS-H 68 mm</b> | Hole-cutter holder | 1         | 35.62 |



32.3

### Double socket 2 x Ø 60 mm

| Article No.  | Depth | Colour | Unit qty. | Outer carton | Palette | €/100  |
|--------------|-------|--------|-----------|--------------|---------|--------|
| <b>E 118</b> | 47 mm | orange | 10        | 100          | 1600    | 253.89 |



32.4

Price incl. VAT - recommended price in Euro

### Cavity wall socket Ø 70 mm

- incl. screw cover

| Article No. | Version | Depth | Colour | Unit qty. | Outer carton | Palette | €/100 |
|-------------|---------|-------|--------|-----------|--------------|---------|-------|
| E 119       |         | 50 mm | orange | 10        | 200          | 3200    | 15454 |

33.1



### Cavity wall junction box 107 x 107 mm

- incl. screw cover

| Article No. | Version  | Colour | Unit qty. | Outer carton | Palette | €/100    |
|-------------|----------|--------|-----------|--------------|---------|----------|
| E 116       |          | orange | 1         | 80           | 1280    | 64026    |
| E 116 GE    | screened | orange | 1         | 80           | 1280    | 1,655.86 |

33.2



### Universal screw cover

| Article No. | Unit qty. | Outer carton | €/100 |
|-------------|-----------|--------------|-------|
| E 112       | 50        | 1000         | 3200  |

33.3



### Replacement screw cover for junction box

- For junction boxes 107 x 107 mm

| Article No. | Unit qty. | €/100 |
|-------------|-----------|-------|
| E 116 D     | 10        | 7727  |

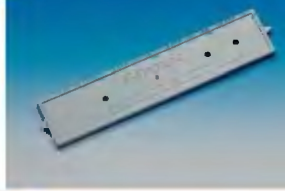
33.4



### Drilling template

| Article No. | Unit qty. | €/100 |
|-------------|-----------|-------|
| BOS         | 1         | 15454 |

33.5



### Replacement parts

| Article No. |  | Unit qty. | €/100    |
|-------------|--|-----------|----------|
| E 150       | Replacement connections                | 50        | 1,269.48 |
| E 151       | Replacement screws for metal claws     | 50        | 883.12   |
| E 152/16    | Replacement fitting screws 3.2 x 16 mm | 100       | 3.42     |
| E 153       | Replacement metal claws                | 50        | 883.12   |

Price incl. VAT - recommended price in Euro

33.6



## POTENTIAL EQUALISATION RAIL

### Potential equalisation rail to VDE 0618, Part 1.

- ⇒ 7 terminals for cable cross-sections 2.5-16 mm<sup>2</sup>
- ⇒ For 1 grounding strip 30 x 3.5 mm
- ⇒ For 1 solid round conductor Ø 7-10 mm (lightning protection)
- ⇒ Easy fitting and adjustment with 4 oval holes in plastic base
- ⇒ Reliable, sealable, clip-on plastic cover



34.1



34.2

### Potential equalisation rail

| Article No. | Unit qty. | Outer carton | €/100  |
|-------------|-----------|--------------|--------|
| PAS 01      | 10        | 50           | 651.30 |



34.3

### Bath grounding terminal

Contact bolt for restrictive grounding of bathtubs and showers.

- For round conductor connection up to 16 mm<sup>2</sup>
- Material: Brass, nickel-plated
- M6 bolt thread

| Article No. | Unit qty. | Outer carton | €/100  |
|-------------|-----------|--------------|--------|
| BEK 16      | 10        | 100          | 187.66 |



34.4

Price incl. VAT - recommended price in Euro

## GROUNDING MATERIALS

### clamps

Grounding clamps to VDE 0190/5.73  
for galvanised steel and copper tubes.

- Connections 2,5 - 16 mm<sup>2</sup>     V2A metal strip     Assembled

| Article No.  | Version      | Pipe-Ø      | Unit qty. | Outer carton | €/100  |
|--------------|--------------|-------------|-----------|--------------|--------|
| <b>EBS 1</b> | 1/8 - 1 1/2* | 5 - 48 mm   | 10        | 200          | 242.86 |
| <b>EBS 2</b> | 1/8 - 3/8*   | 5 - 25 mm   | 10        | 200          | 220.78 |
| <b>EBS 4</b> | 1/8 - 4*     | 16 - 115 mm | 10        | 200          | 353.25 |

35.1



### Pipe grounding clamps

- With connection terminal for round conductors up to 16 mm<sup>2</sup>     Material: Copper, nickel-plated

| Article No.    | Version | Pipe-Ø       | Unit qty. | Outer carton | €/100  |
|----------------|---------|--------------|-----------|--------------|--------|
| <b>ERS 1/4</b> | 1/4*    | 10 - 13,5 mm | 10        | 200          | 419.48 |
| <b>ERS 3/8</b> | 3/8*    | 15 - 16,0 mm | 10        | 200          | 430.52 |
| <b>ERS 1/2</b> | 1/2*    | 18 - 22,0 mm | 10        | 200          | 430.52 |

35.2



### Grounding strip and cross-connectors

- 3 mm thick plates     With intermediate plate  
 Galvanised     Up to 35 mm<sup>2</sup>

| Article No. | Version          | for round conductors     | Unit qty. | Outer carton | €/100  |
|-------------|------------------|--------------------------|-----------|--------------|--------|
| <b>EBV</b>  | grounding strip  | up to 16 mm <sup>2</sup> | 10        | 50           | 419.48 |
| <b>KBV</b>  | cross-connectors | up to 35 mm <sup>2</sup> | 10        | 50           | 419.48 |

35.3



### Connection terminal for grounding strip and cross-connectors

- For round conductors 8 - 10 mm<sup>2</sup>

| Article No.  | Version | Unit qty. | Outer carton | €/100  |
|--------------|---------|-----------|--------------|--------|
| <b>ASK 1</b> | one-way | 10        | 50           | 309.08 |
| <b>ASK 2</b> | one-way | 10        | 50           | 574.02 |

35.4



### Fork and comb rails

- 3-phase T-type fork rail, cross-section 10 mm<sup>2</sup>, 63A  
 1-phase comb rail, insulated, cross-section 10 mm<sup>2</sup>, 63A, fork shoe version angled 90°

| Article No.    | Version   | Unit qty. | Outer carton | €/100    |
|----------------|---|-----------|--------------|----------|
| <b>PGS 12</b>  | 3-phase T-type fork rail, 210 mm, 4 x 3 poles   | 10        | 200          | 485.72   |
| <b>PGS 100</b> | 3-phase T-type fork rail, 1060 mm, 20 x 3 poles | 10        | 50           | 2,428.58 |
| <b>PGS 1</b>   | Comb rail, insulated, 210 mm, 12 poles          | 20        | 500          | 375.33   |
| <b>PGS 110</b> | Comb rail, insulated, 1060 mm, 60 poles         | 20        | 100          | 1,876.63 |

35.5

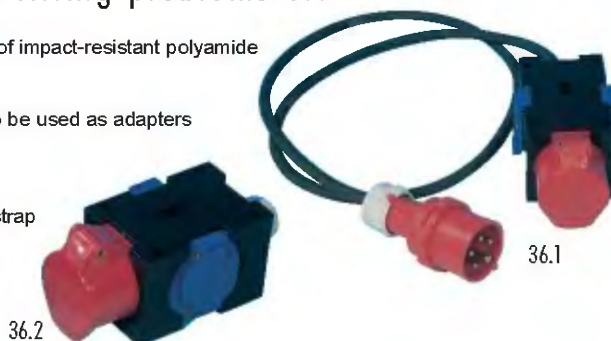


Price incl. VAT - recommended price in Euro

## COMPACT DISTRIBUTORS

### The clever solution to fitting problems ...

- ⇒ Reliable, spray-water-proof version of impact-resistant polyamide for interior and exterior use
- ⇒ Versions with mixed fittings can also be used as adapters
- ⇒ Spray-water-proof to IP 44
- ⇒ Optionally with or without retaining strap
- ⇒ Also available with phase converter



### Compact distributors with retaining strap

| Article No. | Fittings | Input   | €/100     |
|-------------|----------|---|-----------|
| VW 138      |          | Screw fitting PG 16   | 5,409.11  |
| VW 139      |          | Screw fitting PG 21   | 6,513.00  |
| VW 130      |          | Screw fitting PG 21   | 7,616.92  |
| VW 158      |          | Screw fitting with 1.5 m H07RN-F 3 G 1.5 and CEE plug 16 A 5p 400V                      | 7,616.92  |
| VW 159      |          | Screw fitting with 1.5 m H07RN-F 3 G 1.5 and CEE plug 16 A 5p 400V                      | 8,720.88  |
| VW 150      |          | Screw fitting with 1.5 m H07RN-F 3 G 1.5 and CEE plug 16 A 5p 400V                      | 9,824.72  |
| VW 168      |          | CEE plug 16 A 5p 400V   | 6,513.00  |
| VW 169      |          | CEE plug 16 A 5p 400V   | 7,396.13  |
| VW 160      |          | CEE plug 16 A 5p 400V   | 8,500.03  |
| VW 179      |          | Screw fitting with 1.5 m H07RN-F 5 G 1.5 and CEE plug 16 A 5p 400V with phase converter | 9,824.72  |
| VW 170      |          | Screw fitting with 1.5 m H07RN-F 5 G 1.5 and CEE plug 16 A 5p 400V with phase converter | 10,928.69 |
| VW 189      |          | CEE plug 16 A 5p 400V with phase converter  | 8,500.03  |
| VW 180      |          | CEE plug 16 A 5p 400V with phase converter  | 9,603.94  |
| VW 198      |          | Screw fitting with 1.5 m H07RN-F 3 G 1.5 and safety socket                              | 6,733.79  |
| VW 238      |          | Screw fitting PG 16   | 4,987.55  |
| VW 239      |          | Screw fitting PG 21   | 6,071.45  |
| VW 230      |          | Screw fitting PG 21   | 7,175.35  |
| VW 268      |          | Screw fitting with 1.5 m H07RN-F 3 G 1.5 and CEE plug 16 A 5p 400V                      | 7,175.35  |
| VW 269      |          | Screw fitting with 1.5 m H07RN-F 3 G 1.5 and CEE plug 16 A 5p 400V                      | 8,279.26  |
| VW 260      |          | Screw fitting with 1.5 m H07RN-F 3 G 1.5 and CEE plug 16 A 5p 400V                      | 9,383.15  |
| VW 279      |          | Screw fitting with 1.5 m H07RN-F 5 G 1.5 and CEE plug 16 A 5p 400V with phase converter | 9,383.15  |
| VW 270      |          | Screw fitting with 1.5 m H07RN-F 5 G 1.5 and CEE plug 16 A 5p 400V with phase converter | 10,487.04 |
| VW 298      |          | Screw fitting with 1.5 m H07RN-F 3 G 1.5 and safety socket                              | 6,292.24  |

Price incl. VAT - recommended price in Euro

## ALUMINIUM RAIL PORTS

### Cable Guideways made from aluminium Type BK 120/60 mm, Type BK 210/65 mm

- ⇒ Easy installation - hinged clips for cable fixing during mounting
- ⇒ Plastic mouldings facilitate the installation
- ⇒ Special coatings available on inquiry
- ⇒ High price/ performance ratio
- ⇒ No additional covers necessary for type 80 mm

1. **Rail lower part:** intended for direct wall mounting in length 2 m. Note: in case of anodized aluminium rails, small deviations in colour due to allowable material- and process-related differences are possible (see also DIN 17611). As an alternative, we recommend powder coatings in colour RAL 9006 ("white aluminium").

2. **Rail upper part:** for covering the rail.  
Width: 80 mm in 2 m length

3. **Separating wall** for simple separation of different voltage levels. Aluminium in 2 m length. Special length available on inquiry

4. **Plane angle component** for turnaround of BK rail.

5. **Plane angle - upper part:** 80 mm width

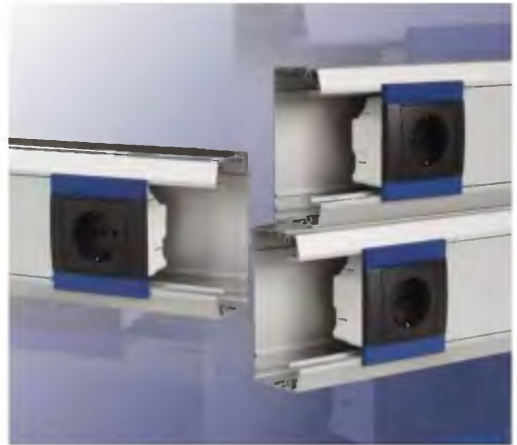
6. **Outer edge component** for turnaround of BK rail.

7. **Outer edge - upper part:** 80 mm width

8. **Inner edge component** for turnaround of BK rail.

9. **End piece left/right** for covering of BK rails.

37.1



37.2



**Item 1 - 3:** special lengths up to 5,6 meter and also special coatings (RAL) are available on short term.

**Item 4 - 9:** briefly available.

#### Rail ports incl. cover

| Article No. | Version      | Unit qty. | €/1m  |
|-------------|--------------|-----------|-------|
| BK 120/60   | BK 120/60 mm | 5 x 2 m   | 9668  |
| BK 210/65   | BK 210/65 mm | 5 x 2 m   | 21900 |

Accessories, plastic mouldings and power sockets on inquiry

Price incl. VAT - recommended price in Euro



- The new, high-quality power supply and telecommunications column made of round aluminium profile, diameter 100 mm.



38.1

- ⇒ The flattened fitting areas can be arranged in any number, size and positioning required, with an 80 mm front, so that no trim plate is necessary.
- ⇒ A transparent, angled segment cover is fitted between the fitting area and the round section, which can optionally also be equipped with lighting.
- ⇒ The integral threaded sections inside the profile enable attachment on 3 sides, for such things as partition walls.
- ⇒ The column is available both as a free-standing column fitted to the floor or with guy-cables. The power supply can be fed in from the top or the bottom, and the column comes complete with aluminium top and bottom plates.



38.2

---

*We can customise your "TOPLINE" column to your individual requirements.*

---

*Price and delivery availability on request.*

---

## DUOline - the connector columns for office use.

- ⇒ Everywhere where flexibility and user-friendliness are required
- ⇒ Space requirement 150 mm x 72 mm (W x D)
- ⇒ For free-standing installation with guy-cables or wall-mounting
- ⇒ Individual fittings on 80 mm front without the need for a trim plate
- ⇒ Connection area and column height up to 5.60 m

Price and delivery availability on request.



39.1

## *Twin line* - the alternative for the office

- ⇒ Suitable for floor-mounting or suspended installation
- ⇒ Also suitable for use on wet-cleaned floors
- ⇒ Power supply can be fed in from the bottom (cavity floor, double floor, floor outlet socket) or the top
- ⇒ Fittings can be mounted on both sides of the column, while the 80 mm front plate dispenses with the need for a trim plate
- ⇒ The sockets are concealed behind an attractively designed aluminium door
- ⇒ Excess cables and plugs are safely and elegantly protected by the aluminium door
- ⇒ Height and colour to your individual choice
- ⇒ Anodised version available ex-stock



40.2



40.1



## Heavy-duty version Functionality and design from the same mould

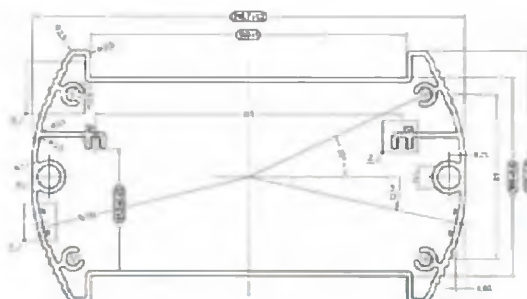
- ⇒ Large wiring room with integral grounding rail
- ⇒ 2 integral 3/8" media inlets (air, water ...)
- ⇒ Optionally with IP X0 or IP X5
- ⇒ Solid top and bottom plates
- ⇒ Patented
- ⇒ Many customising options

**Test us – and ask us for an individual quotation for your tailor-made power supply column.**



41.1

**We will produce your "PowerLine" column to your individual height and equipment requirements in the shortest possible time.**



41.2



## Application examples for interior and exterior areas:

- ⇒ Workshops
- ⇒ Laboratory equipment
- ⇒ Medical equipment
- ⇒ Aerospace
- ⇒ Production centres and assembly lines
- ⇒ Event equipment
- ⇒ Marina facilities
- ⇒ Camping grounds
- ⇒ Public areas, e.g. water treatment installations

and many more.

42.1



42.2



42.3



## FT-15 workshop area – the reliable connection column for all applications.

- ⇒ Reliable version made from a closed aluminium profile
- ⇒ Versatile use in interior and exterior areas
- ⇒ Impact- and shock-resistant
- ⇒ Individual fitting according to your requirements
- ⇒ Our columns are manufactured using high-quality, anodised aluminium
- ⇒ Painting in any RAL colour on request
- ⇒ Also available on request with compressed air connections

Column dimensions: Width 150 mm, depth 100 mm,  
height up to 5.60 m  
Installation width: 108 mm  
Baseplate: 200 mm x 150 mm

43.1



Price and delivery availability on request.



43.2

## FT-15 office area – the connection column for the office.

- ⇒ Everywhere where flexibility and user-friendliness are required
- ⇒ The column can be fitted on 1 or 2 sides with all standard equipment ranges
- ⇒ By means of an additional separating rail, different power circuits can be laid in a single column
- ⇒ Customised fitting available

Column dimensions: Width 150 mm, depth 100 mm,  
height up to 5.60 m  
Installation width 108 mm  
Baseplate: 200 mm x 150 mm

44.1



Price and delivery availability on request.



44.2

## POWER SUPPLY COLUMNS

FT 15 power supply and telecommunications columns for standard equipment ranges in dry and wet areas, and for industrial equipment ranges

- Closed aluminium profile including cover and protective conductor terminal
- Colours white (w) or silver (s)

### FT 15 power supply and telecommunications columns - Office



| Height | Drilling |        | Colour | Protection Type | Order No.        |
|--------|----------|--------|--------|-----------------|------------------|
|        | Side A   | Side B |        |                 |                  |
| 200    | 2        | -      | w      | IPX 0           | FT 15-200w0-A2   |
| 200    | 2        | -      | s      | IPX 0           | FT 15-200s0-A2   |
| 200    | 2        | 2      | w      | IPX 0           | FT 15-200w0-A2B2 |
| 200    | 2        | 2      | s      | IPX 0           | FT 15-200s0-A2B2 |
| 300    | 2        | -      | w      | IPX 0           | FT 15-300w0-A2   |
| 300    | 2        | -      | s      | IPX 0           | FT 15-300s0-A2   |
| 300    | 2        | 2      | w      | IPX 0           | FT 15-300w0-A2B2 |
| 300    | 2        | 2      | s      | IPX 0           | FT 15-300s0-A2B2 |
| 300    | 3        | -      | w      | IPX 0           | FT 15-300w0-A3   |
| 300    | 3        | -      | s      | IPX 0           | FT 15-300s0-A3   |
| 300    | 3        | 3      | w      | IPX 0           | FT 15-300w0-A3B3 |
| 300    | 3        | 3      | s      | IPX 0           | FT 15-300s0-A3B3 |
| 500    | 3        | -      | w      | IPX 0           | FT 15-500w0-A3   |
| 500    | 3        | -      | s      | IPX 0           | FT 15-500s0-A3   |
| 500    | 3        | 3      | w      | IPX 0           | FT 15-500w0-A3B3 |
| 500    | 3        | 3      | s      | IPX 0           | FT 15-500s0-A3B3 |
| 500    | 4        | -      | w      | IPX 0           | FT 15-500w0-A4   |
| 500    | 4        | -      | s      | IPX 0           | FT 15-500s0-A4   |
| 500    | 4        | 4      | w      | IPX 0           | FT 15-500w0-A4B4 |
| 500    | 4        | 4      | s      | IPX 0           | FT 15-500s0-A4B4 |

# POWER SUPPLY COLUMNS

## FT 15 power supply and telecommunications columns - Office



| Drilling |        |        |        |                |                         |
|----------|--------|--------|--------|----------------|-------------------------|
| Height   | Side A | Side B | Colour | ProtectionType | Order No.               |
| 500      | 3/2    | -      | w      | IPX 0          | FT 15-500w0-A3/2K       |
| 500      | 3/2    | -      | s      | IPX 0          | FT 15-500s0-A3/2K       |
| 500      | 3/2    | 3/2    | w      | IPX 0          | FT 15-500w0-A3/2K B3/2K |
| 500      | 3/2    | 3/2    | s      | IPX 0          | FT 15-500s0-A3/2K B3/2K |
| <hr/>    |        |        |        |                |                         |
| 1150     | 1      | -      | w      | IPX 0          | FT 15-1150w0-A1         |
| 1150     | 1      | -      | s      | IPX 0          | FT 15-1150s0-A1         |
| 1150     | 1/1    | -      | w      | IPX 0          | FT 15-1150w0-A1/1       |
| 1150     | 1/1    | -      | s      | IPX 0          | FT 15-1150s0-A1/1       |
| <hr/>    |        |        |        |                |                         |
| 1150     | 2      | -      | w      | IPX 0          | FT 15-1150w0-A2         |
| 1150     | 2      | -      | s      | IPX 0          | FT 15-1150s0-A2         |
| <hr/>    |        |        |        |                |                         |
| 1150     | 2/1    | -      | w      | IPX 0          | FT 15-1150w0-A2/1       |
| 1150     | 2/1    | -      | s      | IPX 0          | FT 15-1150s0-A2/1       |
| <hr/>    |        |        |        |                |                         |
| 1150     | 3      | -      | w      | IPX 0          | FT 15-1150w0-A3         |
| 1150     | 3      | -      | s      | IPX 0          | FT 15-1150s0-A3         |

## FT 15 accessories

| Description         | Protection type                  | Colour | Order No.     |
|---------------------|----------------------------------|--------|---------------|
| Baseplate           | IPX 0                            | w      | FT 15-Fp0w-T2 |
|                     | IPX 0                            | s      | FT 15-Fp0s-T2 |
|                     | IPX 5                            | w      | FT 15-Fp5w-T2 |
|                     | IPX 5                            | s      | FT 15-Fp5s-T2 |
| Compressed air unit | with 1 x 1/4" connection socket  |        | FT 15-De-T1   |
|                     | with 2 x 1/4" connection sockets |        | FT 15-De-T2   |
| Hose connection     | straight 1/4"                    |        | FT 15 Svc-1/4 |
|                     | angled 1/4"                      |        | FT 15 SwW-1/4 |

## POWER SUPPLY COLUMNS

### FT 15 power supply and telecommunications columns – Damp areas



| Height | Drilling |        | Colour | Protection type | Order No.          |
|--------|----------|--------|--------|-----------------|--------------------|
|        | Side A   | Side B |        |                 |                    |
| 300    | 2        | -      | w      | IPX 5           | FT 15-300w5-A2K    |
| 300    | 2        | -      | s      | IPX 5           | FT 15-300s5-A2K    |
| 300    | 2        | 2      | w      | IPX 5           | FT 15-300w5-A2B2K  |
| 300    | 2        | 2      | s      | IPX 5           | FT 15-300s5-A2B2K  |
| 300    | 3        | -      | w      | IPX 5           | FT 15-300w5-A3K    |
| 300    | 3        | -      | s      | IPX 5           | FT 15-300s5-A3K    |
| 300    | 3        | 3      | w      | IPX 5           | FT 15-300w5-A3B3K  |
| 300    | 3        | 3      | s      | IPX 5           | FT 15-300s5-A3B3K  |
| 500    | 3        | -      | w      | IPX 5           | FT 15-500w5-A3K    |
| 500    | 3        | -      | s      | IPX 5           | FT 15-500s5-A3K    |
| 500    | 3        | -      | w      | IPX 5           | FT 15-500w5-A3E    |
| 500    | 3        | -      | s      | IPX 5           | FT 15-500s5-A3E    |
| 500    | 3        | 3      | w      | IPX 5           | FT 15-500w5-A3B3K  |
| 500    | 3        | 3      | s      | IPX 5           | FT 15-500s5-A3B3K  |
| 500    | 3        | 3      | w      | IPX 5           | FT 15-500w5-A3B3E  |
| 500    | 3        | 3      | s      | IPX 5           | FT 15-500s5-A3B3E  |
| 500    | 4        | -      | w      | IPX 5           | FT 15-500w5-A4E    |
| 500    | 4        | -      | s      | IPX 5           | FT 15-500s5-A4E    |
| 500    | 4        | 4      | w      | IPX 5           | FT 15-500w5-A4B4E  |
| 500    | 4        | 4      | s      | IPX 5           | FT 15-500s5-A4B4E  |
| 1150   | 1        | -      | w      | IPX 5           | FT 15-1150w5-A1    |
| 1150   | 1        | -      | s      | IPX 5           | FT 15-1150s5-A1    |
| 1150   | 1/1      | -      | w      | IPX 5           | FT 15-1150w5-A1/1  |
| 1150   | 1/1      | -      | s      | IPX 5           | FT 15-1150s5-A1/1  |
| 1150   | 2        | -      | w      | IPX 5           | FT 15-1150w5-A2K   |
| 1150   | 2        | -      | s      | IPX 5           | FT 15-1150s5-A2K   |
| 1150   | 2        | -      | w      | IPX 5           | FT 15-1150w5-A2E   |
| 1150   | 2        | -      | s      | IPX 5           | FT 15-1150s5-A2E   |
| 1150   | 2/1      | -      | w      | IPX 5           | FT 15-1150w5-A2/1K |
| 1150   | 2/1      | -      | s      | IPX 5           | FT 15-1150s5-A2/1K |
| 1150   | 2/1      | -      | w      | IPX 5           | FT 15-1150w5-A2/1E |
| 1150   | 2/1      | -      | s      | IPX 5           | FT 15-1150s5-A2/1E |
| 1150   | 3        | -      | w      | IPX 5           | FT 15-1150w5-A3K   |
| 1150   | 3        | -      | s      | IPX 5           | FT 15-1150s5-A3K   |
| 1150   | 3        | -      | w      | IPX 5           | FT 15-1150w5-A3E   |
| 1150   | 3        | -      | s      | IPX 5           | FT 15-1150s5-A3E   |






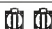

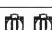
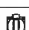

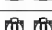
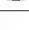


## COMBINATION SOCKET UNITS

Based on our system housing with large connection spacing.

- ⇒ Reliable, spray-water-proof version of impact-resistant, weather-resistant polystyrol
- ⇒ Spray-water-proof to IP 44
- ⇒ Power supply fed in through pre-stamped openings at top or bottom
- ⇒ The sockets are fitted with self-closing, spring covers of impact-resistant polyamide
- ⇒ With transparent door, optionally with lock
- ⇒ Also available on request ready-wired, with or without fuses



Unwired combination units / available on request ready-wired

| Article No. | Fittings  | Input  | €/1    |
|-------------|---|--|--------|
| SK 4200     |     | 4 x sockets, 2 x CEE 16 A                                | 324.00 |
| SK 4110     |      | 4 x sockets, 1 x CEE 16 A, 1 x CEE 32 A                  | 336.00 |
| SK 4020     |     | 4 x sockets, 2 x CEE 32 A                                | 348.00 |
| SK 3210     |      | 3 x sockets, 2 x CEE 16 A, 1 x CEE 32 A                  | 344.00 |
| SK 2111     |     | 2 x sockets, 1 x CEE 16 A, 1 x CEE 32 A, 1 x main switch | 440.00 |

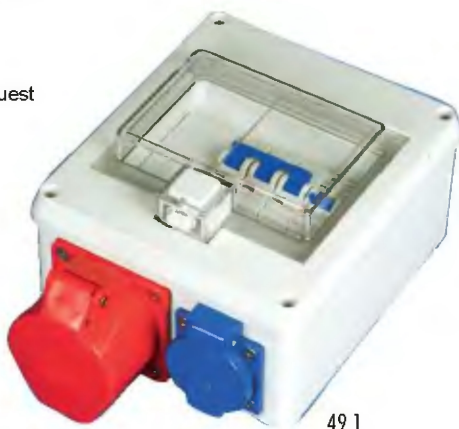
Other versions available on request!

Price incl. VAT - recommended price in Euro

## COMBINATION SOCKET UNITS – SK MINI




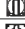



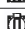

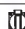





### Based on our small distributors IP 55 - damp area onsurface installation

- ⇒ Reliable, spray-water-proof version of high-quality plastic
- ⇒ Spray-water-proof to IP 44
- ⇒ The sockets are fitted with self-closing, spring covers of impact-resistant polyamide
- ⇒ With transparent door, optionally with lock, made of impact-proof and weather-resistant polycarbonate
- ⇒ Wired with fuses
- ⇒ Also available unwired on request



49.1

### Combination socket units – SK Mini

| Article No. | Fittings  | Input  |
|-------------|---|--|
| SK mini 10  |    | 1 x safety socket, 1 x FI 2-pin, 250,03 A, 1 x LS16 A (C) 1-pin                                  |
| SK mini 20  |     | 2 x safety sockets, 1 x FI 2-pin, 250,03 A, 2 x LS16 A (C) 1-pin                                 |
| SK mini 30  |    | 3 x safety sockets, 1 x FI 2-pin, 400,03 A, 3 x LS16 A (C) 1-pin                                 |
| SK mini 01  |    | 1 x CEE 16 A, 1 x LS16 A (C) 3-pin   |
| SK mini 11  |     | 1 x safety socket, 1 x CEE 16 A, 1 x LS16 A (C) 1-pin, 1 x LS16 A (C) 3-pin                      |
| SK mini 21  |    | 2 x safety sockets, 1 x CEE 16 A, 1 FI 4-pin, 400,03 A, 2 x LS16 A (C) 1-pin, x LS16 A (C) 3-pin |
| SK mini 12  |    | 1 x safety socket, 2 x CEE 16 A, 1 x LS16 A (C) 1-pin, 2 x LS16 A (C) 3-pin                      |

Other versions available on request

Price incl. VAT - recommended price in Euro



SK mini 10



SK mini 20



SK mini 30



SK mini 01



SK mini 11



SK mini 21



SK mini 12

## STAINLESS STEEL WEATHER PROTECTION SYSTEMS

Protect your electrical installations from the humidity!

- ⇒ Reliable, stainless steel construction
- ⇒ Perfect protection against weather effects and UV radiation
- ⇒ Maintenance-free stainless steel version with cable-holder rail in the column
- ⇒ Double rear wall installation plate
- ⇒ Grounding bolts on all necessary parts



- For safe use on camping grounds, in agriculture, industrial plant, harbour facilities, waste incineration plant, power stations, tank storage systems etc

### Stainless steel weather protection columns

| Article No. | Dimensions in mm (H x W x D) | Overall height | Prices     |
|-------------|------------------------------|----------------|------------|
| WDS 1       | 445 x 415 x 260              | 1300           | On request |
| WDS 2       | 625 x 415 x 260              | 1300           | On request |

# F-tronic®

Winfried Fohs GmbH  
 Zum Gerlen 25  
 66131 Saarbrücken  
 Germany

Customer No. \_\_\_\_\_

Company stamp

## Order

Delivery and invoicing via an electronics wholesaler of your choice

| Pos. | Article | Description | Quantity | Price/each |
|------|---------|-------------|----------|------------|
| 1    |         |             |          |            |
| 2    |         |             |          |            |
| 3    |         |             |          |            |
| 4    |         |             |          |            |
| 5    |         |             |          |            |
| 6    |         |             |          |            |
| 7    |         |             |          |            |
| 8    |         |             |          |            |
| 9    |         |             |          |            |
| 10   |         |             |          |            |
| 11   |         |             |          |            |
| 12   |         |             |          |            |
| 13   |         |             |          |            |
| 14   |         |             |          |            |
| 15   |         |             |          |            |

Order No. \_\_\_\_\_

Contact \_\_\_\_\_

Delivery date \_\_\_\_\_

Date, signature \_\_\_\_\_

Subject to the payment and delivery conditions of F-tronic Winfried Fohs GmbH

# F-tronic®

Winfried Fohs GmbH  
 Zum Gerlen 25  
 66131 Saarbrücken  
 Germany

Customer No. \_\_\_\_\_

Company stamp

## Order

Delivery and invoicing via an electronics wholesaler of your choice

| Pos. | Article | Description | Quantity | Price/each |
|------|---------|-------------|----------|------------|
| 1    |         |             |          |            |
| 2    |         |             |          |            |
| 3    |         |             |          |            |
| 4    |         |             |          |            |
| 5    |         |             |          |            |
| 6    |         |             |          |            |
| 7    |         |             |          |            |
| 8    |         |             |          |            |
| 9    |         |             |          |            |
| 10   |         |             |          |            |
| 11   |         |             |          |            |
| 12   |         |             |          |            |
| 13   |         |             |          |            |
| 14   |         |             |          |            |
| 15   |         |             |          |            |

Order No. \_\_\_\_\_

Contact \_\_\_\_\_

Delivery date \_\_\_\_\_

Date, signature \_\_\_\_\_

Subject to the payment and delivery conditions of F-tronic Winfried Fohs GmbH

## Payment and delivery conditions of F-tronic Winfried Fohs GmbH

### Prices:

Our prices apply ex-works, including packaging. In the event of wage, material price or tax increases between placement and supply of the order, we reserve the right to amend our prices accordingly. Articles containing copper or silver may be subject to surcharge. Articles will be invoiced on the basis of prices prevailing on receipt of the order. In the event of an increase in prices of non-precious metals, we reserve the right to charge the difference prevailing on the date of receipt of the order in the form of a material surcharge.

### Delivery times:

Quoted delivery times are not binding. Claims may not be made if the specified delivery time is exceeded.

### Packaging:

Special packaging will be invoiced at cost price. If the packaging is returned carriage-paid and is reusable, we will credit 2/3 of the invoiced value. We cannot take back special packaging.

### Dispatch:

If the order value exceeds € 511,- net, delivery will be made from the delivery warehouse to the destination carriage-paid. In case of express deliveries with a net value of over € 511,- we will credit the proportional normal freight costs. Special distributors and other special products will be delivered ex-works and carriage charged. The risk is transferred to the purchaser as soon as the goods leave our delivery warehouse.

### Payment:

Our invoices are due for payment at the latest within 30 days of the invoice date, without deduction. 2% settlement discount may be deducted for payment within 10 days. Late payments will be subject to interest at a rate of 5% above the current discount rate of the Deutsche Bundesbank. If the purchaser does not pay outstanding invoices within 10 days of a reminder, all outstanding invoices become due for payment immediately. We reserve the right to withhold outstanding deliveries until full payment of all outstanding invoices. In case of customers who are not known to us, we will deliver only against advance payment, crediting the 2% settlement discount. If after accepting an order there are justified grounds to doubt the ability of the purchaser to make payment, we may require the assignment of security, or withdraw from the contract. In this case, the purchaser is not entitled to make any claim for compensation for damages.

### Retention of ownership:

The goods remain the property of the seller until full payment of all outstanding claims, including subsidiary claims, compensation for damages and the redemption of cheques and foreign exchange. Ownership continues to be retained even if individual claims are included in a current invoice and the balance is drawn and acknowledged. The purchaser is entitled to resell or process the retained goods, subject to the following conditions. The authorisation of the purchaser to process retained goods in the normal course of business ends with the stoppage of payments by the purchaser or the application for institution of insolvency or bankruptcy proceedings. By processing the retained goods, the purchaser does not acquire ownership of the new goods in accordance with § 950 BGB (German Civil Code). Processing is carried out on behalf of the seller, without placing him under any liability. If the goods are processed or mixed with other goods, the seller acquires joint ownership of the new goods in the same ratio of the value of the retained goods to the overall value of the new goods created. The purchaser hereby relinquishes in favour of the seller all claims and subsidiary rights arising from the resale of the retained goods, to the extent that the goods have been processed or mixed, and the seller has thereby acquired joint ownership of the new goods, up to the relevant invoice value. In the latter case, the seller acquires a proportional claim to the sales price corresponding to the relationship of the invoice value of his retained goods to the invoice value of the new goods. If the purchaser sells the claim by factoring the invoice, he hereby relinquishes his claim against the factor in favour of the seller. The seller accepts this relinquishment. The seller will not collect relinquished claims, provided that the purchaser fulfils his payment obligations. This collection authorisation lapses if the purchaser falls

into payment arrears. In this case, the seller is authorised by the purchaser to notify the third party of relinquishment of the claim, and to collect payment himself. The purchaser is obliged to provide the seller at his request with a complete listing of all claims due to the seller, with names and addresses of the purchaser's customers, amount of the individual claims, invoice dates etc., and to provide the seller with all the information necessary to pursue the relinquished claims, and to allow this information to be verified. The purchaser is entitled to collect the claims himself, unless otherwise instructed by the seller. If the total value of the securities assigned to us exceed our outstanding claims by more than 20%, we will release the relevant securities at our discretion and on the request of the purchaser.

### Guarantee:

Guarantee claims are restricted as follows: we will provide free replacement of faulty materials. All further guarantee claims, and especially claims for reduction of the purchase price, cancellation of the purchase contract, supply of similar replacement goods or compensation for damages are excluded. If products have been manufactured to the purchaser's drawings or samples, the purchaser assumes the guarantee that these do not infringe the rights of third parties. If the purchaser specifies the production method or material, he is liable for the suitability of the goods. The descriptions or technical data contained in our product information do not constitute assured properties. These are only deemed to exist if they have been expressly confirmed as such by us in writing. In all cases, we reserve the right to make design changes.

### Liability:

Liability is restricted to such damages as could reasonably have been expected in accordance with the circumstances known on conclusion of the contract. In particular, these do not extend to indirect damages, consequential damages, breach of contract, loss of profits or financial damages. Liability in accordance with product liability laws remains unaffected. Personal liability on the part of our employees engaged in the fulfilment of the contract is excluded. Any damages occurring must be reported within 6 days of receipt of the goods. Claims for compensation for damages lapse 6 months after delivery of the goods or provision of services. Liability is excluded if installation or connection of the products is carried out by any persons other than specialist personnel of an authorised electrics company.

### Complaints:

Complaints must be notified to us in writing within 8 days after receipt of the goods. All guarantee claims after this period are excluded.

### Return of goods:

Goods supplied in accordance with the contract cannot be exchanged or returned. If in exceptional cases we are prepared to exchange or take back the goods, the following applies: the exchange or return of the goods must be agreed with us in writing prior to dispatch. The goods must then be returned carriage-paid and free of other charges to one of our warehouses. The goods must arrive back with us in perfect condition, the goods must not be used, already installed, broken, defective or modified. It is also hereby agreed that we will invoice the purchaser 10% of the value of the exchanged or returned goods to cover costs, unless another amount has been agreed in writing.

### Other conditions:

These conditions apply to the exclusion of varying conditions on the part of the purchaser, and apply exclusively to all transactions between the seller and purchaser. This still applies even if the purchaser does not acknowledge our conditions in his purchasing conditions, and we do not expressly reject them. Variations, additions or subsidiary agreements are only valid if confirmed by the seller in writing or other legally binding way.

### Seat of adjudication:

Seat of adjudication is Saarbrücken.

This edition replaces all previous payment and delivery conditions.

# WE MAKE THE SPACE FOR YOUR CONNECTIONS...

Visit us on the Internet!  
[www.f-tronic.de](http://www.f-tronic.de)

Contact

## *F-tronic*<sup>®</sup>

Winfried Fohs GmbH  
Zum Gerlen 25  
66131 Saarbrücken  
Germany

Phone: +49 (0) 68 93 / 94 83-0  
Fax: +49 (0) 68 93 / 67 68  
Internet: [www.f-tronic.de](http://www.f-tronic.de)  
eMail: [info@f-tronic.de](mailto:info@f-tronic.de)